

2 vie - Sede Sfera di PTFE (EPDM / FPM)
Attacchi Filettati o Incollaggio - Funzione DE / SE
2 way - PTFE (EPDM / FPM) Ball Seat
Threaded & Plain Female Ends - DA / SR Function

Valvole per Applicazioni Anticorrosive

per Fluidi molto Aggressivi ove i Materiali Metallici non sono compatibili
Valves for Corrosive Applications
for High Aggressive Fluids where Metallic Material is not suitable



INFORMAZIONI TECNICHE - TECHNICAL INFORMATION

Valvola - Valve Body

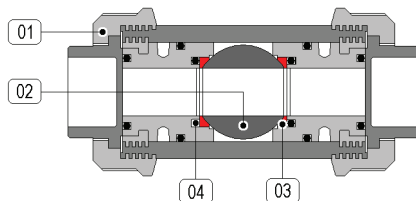
Pressione Nominale PN16 vds. Diagramma
Nominal Pressure see Diagram
Campo Temperature 0...+60°C vds. Diagramma
Temperature Range see Diagram
Attacchi Terminali Filettati vds. pag. 2
Connections Threaded Ports see page 2

Attuatore - Actuator

Campo Temperature 0 ... +60 °C
Temperature Range
Pressione di Comando da 6.0 bar minimo a 8.0 bar massimo
Control Pressure from 6.0 bar minimum to 8.0 bar maximum
Accessori Standard Indicatore di Posizione (2) x Viti di Registrazione della Corsa
Standard Equipments Visual Position Indicator (2) x Travel Adjustment Screws
Accessori Opzionali Box Micro con Finecorsa Meccanici o Sensori Proximity
Optional Equipments Electrovalvole 5/2 Vie con interfaccia Namur
Limit Switch Box with Mechanical or Proximity Switches
5/2 way Solenoid Valves with Namur interface

Materiali - Materials

Attuatore - Actuator Tecnopolimero - Technopolymer Polipropilene - Polypropylene
Corpo - Valve Body 01 PVC-U
Sfera - Ball 02 PVC-U
Tenuta Sede - Ball Seat 03 PTFE
O-Ring 04 EPDM - FPM (a.r. / o.r.)



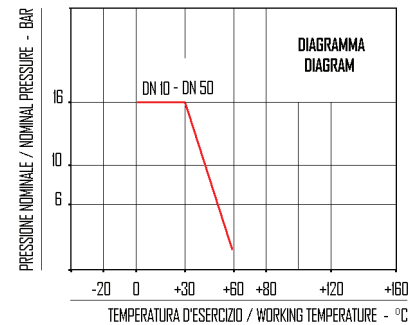
Fluidi - Fluids

Valvola idonea per fluidi compatibili con le parti a contatto. La scelta dei materiali è responsabilità del cliente che dovrà assicurarsi se adatti all'impiego. La scelta è limitata dai dati di temperatura e pressione della valvola. The valve is suitable for fluids compatible with the parts in contact. The user is responsible for the right choice of compatibility with knowledge of the real working conditions. The choice of the valve must also consider the conditions of temperature and pressure.

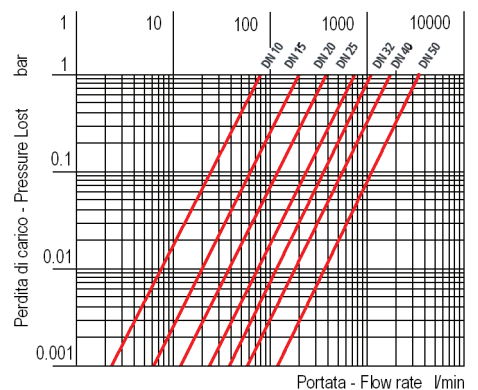
| Mis. - Size DN | DE / DA | SE / SR - NC |
|----------------|------------|--------------|
| G 3/8" Ø 10 | 522●30U100 | 522●31U102 |
| G 1/2" Ø 15 | 522●40U100 | 522●41U102 |
| G 3/4" Ø 20 | 522●50U100 | 522●51U134 |
| G 1" Ø 25 | 522●60U100 | 522●61U134 |
| G 1-1/4" Ø 32 | 522●70U130 | 522●71U134 |
| G 1-1/2" Ø 40 | 522●80U130 | 522●81U184 |
| G 2" Ø 50 | 522●90U130 | 522●91U184 |

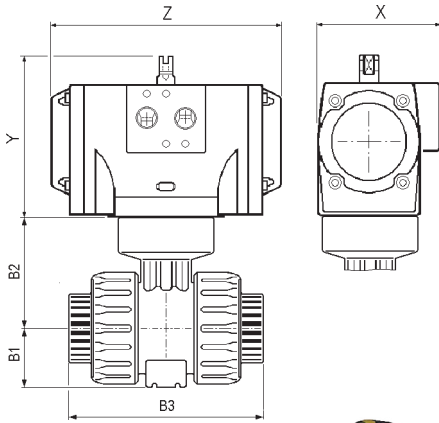
NOTE - REMARKS

- sostituire il digit ● col materiale desiderato della guarnizione
2 → EPDM
4 → FPM
- please replace digit ● by desired ball O-Ring material
2 → EPDM
4 → FPM

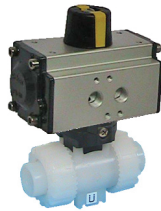


il diagramma è puramente indicativo - this diagram is merely indicative





- ✓ **Tipo 5223**
Versione di PVDF
- ✓ **5223 type**
PVDF Version



DIMENSIONI - DIMENSIONS (mm.)

| DN | att. act. | B1 B2 | | attacchi - connections | | | | | | | | | | TPL ACT. | | | |
|----|-----------|-------|-----|------------------------|--------|--------|--------|--------|--------|--------|--------|--------|--------|----------|-----|-----|-----|
| | | B1 | B2 | "I" D | "L" B3 | "A" B3 | "J" B3 | "D" B3 | "F" B3 | "N" B3 | "G" B3 | "O" B3 | "S" B3 | Y | X | Z | |
| 10 | DE-DA | 29 | 58 | 16 | 103 | 103 | 117 | - | 149 | 103 | 103 | - | - | - | 91 | 67 | 119 |
| | SE-SR | 29 | 58 | 16 | | | | | | | | | | | 91 | 67 | 119 |
| 15 | DE-DA | 29 | 58 | 20 | 103 | 103 | 117 | 131 | 124 | 110 | 111 | 103 | 130 | 130 | 91 | 67 | 119 |
| | SE-SR | 29 | 58 | 20 | | | | | | | | | | | 91 | 67 | 119 |
| 20 | DE-DA | 35 | 73 | 25 | 115 | 115 | 129 | 147 | 144 | 116 | 117 | 115 | 150 | 150 | 91 | 67 | 119 |
| | SE-SR | 35 | 73 | 25 | | | | | | | | | | | 111 | 86 | 160 |
| 25 | DE-DA | 39 | 74 | 32 | 128 | 128 | 142 | 164 | 154 | 134 | 135 | 128 | 160 | 160 | 91 | 67 | 119 |
| | SE-SR | 39 | 74 | 32 | | | | | | | | | | | 111 | 96 | 160 |
| 32 | DE-DA | 46 | 97 | 40 | 146 | 146 | 162 | 182 | 174 | 153 | 153 | 146 | 180 | 180 | 111 | 86 | 160 |
| | SE-SR | 46 | 97 | 40 | | | | | | | | | | | 111 | 86 | 160 |
| 40 | DE-DA | 52 | 104 | 50 | 164 | 164 | 172 | 212 | 194 | 156 | 156 | 164 | 200 | 200 | 111 | 86 | 160 |
| | SE-SR | 52 | 104 | 50 | | | | | | | | | | | 133 | 101 | 175 |
| 50 | DE-DA | 62 | 114 | 63 | 199 | 199 | 199 | 248 | 224 | 186 | 186 | 199 | 230 | 230 | 111 | 86 | 160 |
| | SE-SR | 62 | 114 | 63 | | | | | | | | | | | 133 | 101 | 175 |

- **Tipo "I" - Type "I"**
attacchi femmina metrici da incollaggio
metric series plain female ends
- **Tipo "L" - Type "L"**
attacchi femmina serie BS da incollaggio
BS series plain female ends
- **Tipo "A" - Type "A"**
attacchi femmina serie ASTM
da incollaggio
ASTM series plain female ends
- **Tipo "J" - Type "J"**
attacchi femmina serie JIS
da incollaggio
JIS series plain female ends
- **Tipo "D" - Type "D"**
attacchi maschio metrici
da incollaggio
metric series plain male ends

- **Tipo "F" - Type "F"**
attacchi femmina filetto cilindrico gas
BS parallel threaded female ends
- **Tipo "N" - Type "N"**
attacchi femmina filetto cilindrico NPT
NPT parallel threaded female ends
- **Tipo "G" - Type "G"**
attacchi femmina filetto JIS
JIS threaded female ends
- **Tipo "O" - Type "O"**
flange libere UNI 2223 PN 10/16, DIN 2501
scartamento secondo EN 558-1
UNI 2223 PN 10/16, DIN 2501
revolving flanges
face to face according EN 558-1
- **Tipo "S" - Type "S"**
flange libere foratura ANSI 150 #RF
ANSI 150 #RF revolving flanges

Tipo 561
Elettrovalvola 5 Vie
Interfaccia Namur
Protezione IP 65

561 Type
5 Way Solenoid Valve
Namur Interface
IP 65 Protection Degree

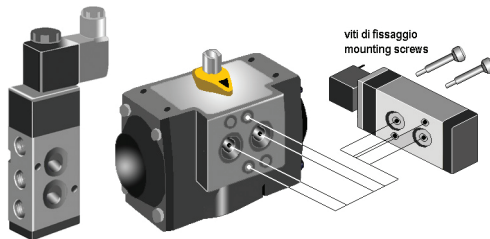


TABELLA DI SELEZIONE - SELECTION CHART

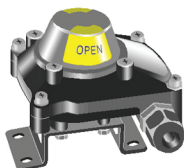
| Serie Series | Attacchi Corpo Body Connections | Materiale Material |
|--------------|--|--------------------|
| 5222 | Attacchi Filettati ISO 228 ISO 228 Threaded Ports | PVC-U EPDM |
| 5224 | Attacchi Filettati ISO 228 ISO 228 Threaded Ports | PVC-U FPM |

MICRO BOX - LIMIT SWITCH BOXES

Non previsto su attuatore U030
Not suitable on U030 Actuator type

Tipo A250
Custodia di Alluminio verniciato
IP 67 - Atex II 3 GD

A250 Type
Epoxy Coated Aluminium Housing
IP 67 - Atex II 3 GD



Tipo PFB
IP 65 - Box Micro Rotativo per
Valvole Manuali 1/4 di giro

PFB Type
IP 65 - Round Limit Switch Box
for 1/4 turn Manual Valves

