

3 Vie foratura a L o T - Attacchi Flangia PN 16 / 40
Sede Sfera di TFM 1600
3 Way L or T port - PN 16 / 40 Flanged Connections
TFM 1600 Ball Seat

Valvole per trattamento acque, sistemi di raffreddamento, filtri industriali, impianti di processo per industrie chimiche e farmaceutiche, industrie alimentari, refrigerazione di scambiatori di calore. E' adatta per Vuoto.

Valves for water technology and treatment, cooling systems, industrial filters, pharmaceutical & chemical processing technology, food plants, refrigeration and cooling heat exchangers. Suitable for Vacuum.



INFORMAZIONI TECNICHE - TECHNICAL INFORMATION

Corpo - Valve Body

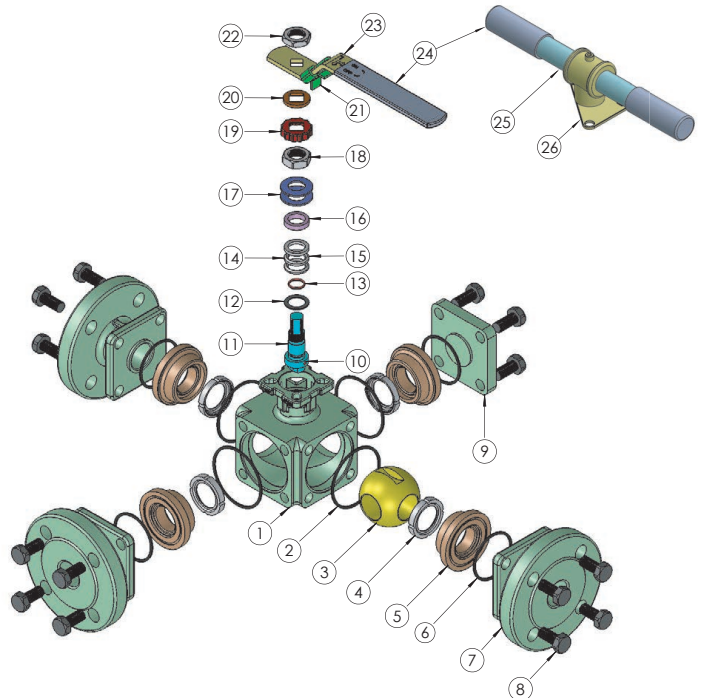
| | | |
|------------------------|--------------------------|--------------------------------------|
| Pressione Nominale | PN 40 | (DN 15 - 50) |
| Nominal Pressure | PN 16 | (DN 65 - 80 - 100 - 150) |
| Campo Temperatura | -29 °C | +175 °C |
| Temperature Range | | |
| Tenuta Vuoto | 10 ⁻³ torr | |
| Vacuum Rating | | |
| Attacchi - Connections | Flange / End Flange | DIN 2501 PN10 - PN 40 DN15 ...DN 150 |
| Costruzione - Design | DIN 3357/1.2 / EN12516-1 | |

Attuatore - Actuator

| | |
|----------------------|--|
| Campo Temperatura | -20 ... +80 °C |
| Temperature Range | |
| Pressione di Comando | da 6.0 bar minimo a 10.0 bar massimo |
| Control Pressure | from 6.0 bar minimum to 10.0 bar maximum |
| Accessori Standard | Indicatore di Posizione (2) x Viti di Registrazione della Corsa |
| Standard Equipments | Visual Position Indicator (2) x Travel Adjustment Screws |
| Accessori Opzionali | Box Micro con Finecorsa Meccanici o Sensori Proximity |
| Optional Equipments | Elettrovalvole 5/2 Vie con interfaccia Namur Limit Switch Box with Mechanical or Proximity Switches 5/2 way Solenoid Valves with Namur interface |

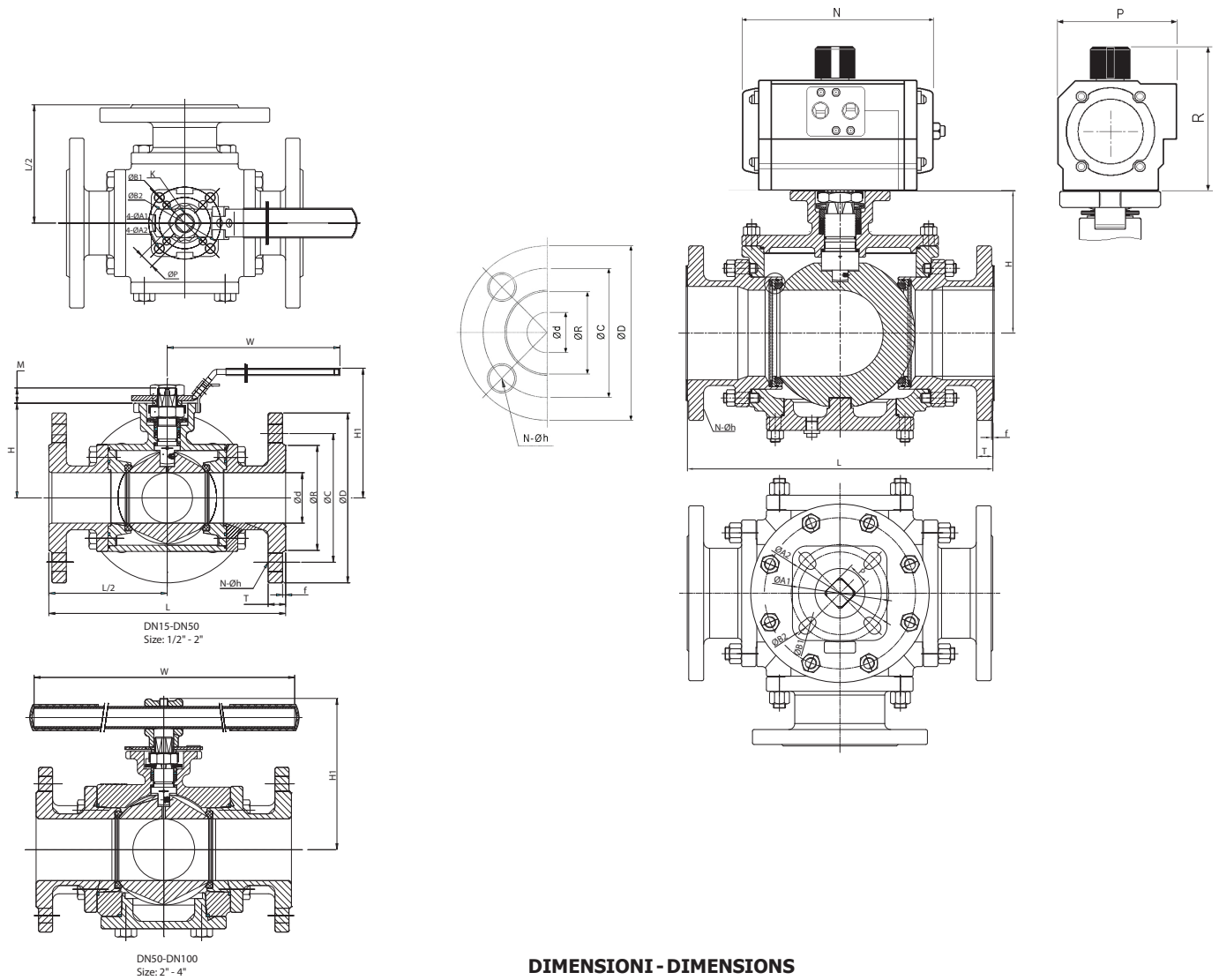
Materiali - Materials

| | | |
|-------------------------------------|----|---------------------------|
| Corpo - Valve Body | 01 | Inox SS 316 |
| Tenuta corpo - Body Gasket | 02 | PTFE |
| Sfera - Ball | 03 | Inox SS CF8M |
| Tenuta Sede - Ball seat | 04 | TFM1600 |
| Fermo sede - Seat retainer DN15-50 | 05 | Inox / SS CF8M |
| Tenuta coperchio - Cap Gasket | 06 | PTFE |
| Testata - End cap | 07 | Inox / SS 316 |
| Bulloneria - Bolt | 08 | Inox / SS A2-70 |
| Testata - End cap | 09 | Inox / SS CF8M |
| Dispositivo Antistatico | 10 | Inox / SS 316 |
| Anti-static system | | |
| Stelo - Stem | 11 | Inox / SS 316 |
| Rondella stelo - Thrust washer | 12 | TFM 1600 |
| O-ring | 13 | FKM (VITON) |
| Premibussola - Gland | 14 | Inox / SS 316 |
| Pacco Premistoppa | 15 | TFM1600 |
| V-ring stem packaging | | |
| Rondella stelo - Bushing | 16 | 50% Inox/SS + 50% PTFE |
| Rondella - Washer | 17 | Inox / SS 301 |
| Dado di bloccaggio stelo - Stem nut | 18 | Acier / Steel 194-8 |
| Fermo di serraggio dado | 19 | Inox / SS 314 |
| Stop-lock-cap | | |
| Rondella Leva - Handle washer | 20 | Inox / SS 304 |
| Dispositivo di bloccaggio | 21 | Inox / SS 304 |
| Lock device DN 15-50 | | |
| Dado leva manuale | 22 | Acier / Steel 194-8 |
| Handle nut DN 15-50 | | |
| Leva manuale - Handle DN 15-50 | 23 | Inox / SS 304 |
| Impugnatura leva - Handle sleeve | 24 | Plastique / Vinyl plastic |
| Leva tubolare | 25 | Acier / Steel A53 + Zinc |
| Pipe handle DN65-100 | | |
| Supporto Leva | 26 | Inox / SS CF8 |
| Handle adapter DN65-100 | | |



Fluidi - Fluids

Valvola idonea per fluidi compatibili con le parti a contatto. La scelta dei materiali è responsabilità del cliente che dovrà assicurarsi se adatti all'impiego. La scelta è limitata dai dati di temperatura e pressione della valvola. The valve is suitable for fluids compatible with the parts in contact. The user is responsible for the right choice of compatibility with knowledge of the real working conditions. The choice of the valve must also consider the conditions of temperature and pressure.



DIMENSIONI - DIMENSIONS

| Misura Size | Tipo Attuatore Actuator Type | | Dimensioni (mm.) Dimensions (mm.) | | | | | | | Kv | | |
|----------------|---------------------------------|-------|--------------------------------------|-----|----------------|-------|------|-------|-------|-----|-------|--------------------|
| DN | Funz. / Function | | Ød | L | L ² | H | H1 | W | R | P | N | m ³ / h |
| 15 | U070 | DE/DA | 15 | 150 | 75 | 52,5 | 83,3 | 144,5 | 98 | 70 | 160 | 15,354 |
| | U154 | SE/SR | | | | | | | 111 | 81 | 175 | |
| 20 | U070 | DE/DA | 20 | 165 | 82,5 | 57 | 87 | 144,5 | 98 | 70 | 160 | 30,708 |
| | U204 | SE/SR | | | | | | | 128 | 96 | 186 | |
| 25 | U170 | DE/DA | 25 | 180 | 90 | 68 | 99 | 175 | 111 | 81 | 207 | 38,385 |
| | U254 | SE/SR | | | | | | | 128 | 96 | 248 | |
| 32 | U170 | DE/DA | 32 | 190 | 95 | 72 | 103 | 175 | 111 | 81 | 207 | 61,416 |
| | U304 | SE/SR | | | | | | | 147 | 114 | 241 | |
| 40 | U250 | DE/DA | 38 | 212 | 106 | 85 | 119 | 200 | 128 | 96 | 248 | 95,536 |
| | U354 | SE/SR | | | | | | | 196 | 138 | 246 | |
| 50 | U300 | DE/DA | 49 | 230 | 115 | 92 | 126 | 200 | 147 | 114 | 241 | 191,072 |
| | U404 | SE/SR | | | | | | | 184 | 131 | 305 | |
| 65 | U350 | DE/DA | 63 | 290 | 145 | 107 | 172 | 400 | 184 | 131 | 261 | 262,724 |
| | U454 | SE/SR | | | | | | | 198,5 | 145 | 367 | |
| 80 | U400 | DE/DA | 75 | 310 | 155 | 119 | 187 | 400 | 184 | 131 | 305 | 349,73 |
| | U504 | SE/SR | | | | | | | 232 | 181 | 380,5 | |
| 100 | U500 | DE/DA | 99 | 355 | 127,5 | 150 | 214 | 400 | 232 | 181 | 380,5 | 649,986 |
| | U604 | SE/SR | | | | | | | 287 | 230 | 467 | |
| 150 | U600 | DE/DA | 138 | 490 | | 228,5 | | | 287 | 230 | 467 | 1539 |
| | U705 | SE/SR | | | | | | | 268 | 338 | 636 | |

DIN PN 40 / 16 (mm.)

| DN | Ød | ØR | ØC | ØD | f | T | N-Øh |
|-----|-----|-----|-------|-----|---|----|-----------|
| 15 | 15 | 45 | 65 | 95 | 2 | 16 | 4 x Ø14 |
| 20 | 20 | 58 | 75 | 105 | 2 | 18 | 4 x Ø14 |
| 25 | 25 | 68 | 85 | 115 | 2 | 18 | 4 x Ø14 |
| 32 | 32 | 78 | 100 | 140 | 2 | 18 | 4 x Ø18 |
| 40 | 38 | 88 | 110 | 150 | 3 | 18 | 4 x Ø18 |
| 50 | 49 | 102 | 125 | 165 | 3 | 20 | 4 x Ø18 |
| 65 | 63 | 122 | 145 | 185 | 3 | 20 | 4 x Ø18 |
| 80 | 75 | 138 | 160 | 200 | 3 | 20 | 8 x Ø18 |
| 100 | 99 | 158 | 180 | 220 | 3 | 20 | 8 x Ø18 |
| 150 | 138 | 216 | 241,3 | 280 | 3 | 20 | 8 x Ø22,3 |



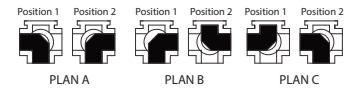
| MISURA - SIZE | DE / DA | SE / SR |
|---------------|---------|----------------|
| DN 15 | Ø 15 | 5392 4 ● U 070 |
| DN 20 | Ø 20 | 5392 5 ● U 070 |
| DN 25 | Ø 25 | 5392 6 ● U 170 |
| DN 32 | Ø 32 | 5392 7 ● U 170 |
| DN 40 | Ø 38 | 5392 8 ● U 250 |
| DN 50 | Ø 50 | 5392 9 ● U 300 |
| DN 65 | Ø 63,5 | 5392 A ● U 350 |
| DN 80 | Ø 76 | 5392 B ● U 400 |
| DN 100 | Ø 100 | 5392 C ● U 500 |
| DN 150 | Ø 150 | 5392 E ● U 600 |

Aggiungere Suffisso EX al Numero Catalogo Es. 5392 60 U170EX
Add the Suffix EX to Catalog Number Ex. 5392 60 U170EX

NOTE - REMARKS

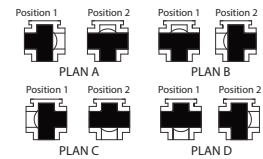
- sostituire il digit ● con la funzione desiderata

L-PORT 90° turn



- please replace digit ● by desired function

T-PORT 90° turn

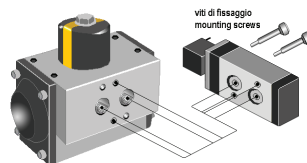


ESEMPIO DI MONTAGGIO

Elettrovalvole per attuatori pneumatici con interfaccia Namur

MOUNTING EXAMPLE

Control solenoid valve for pneumatic actuators with Namur interface



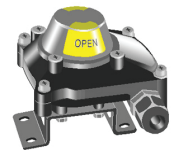
MICRO BOX - LIMIT SWITCH BOXES

Tipo A250

Custodia di Alluminio verniciato IP 67 - Atex II 3 GD

A250 Type

Epoxy Coated Aluminium Housing



Tipo 561

Elettrovalvola 5 Vie Interfaccia Namur Protezione IP 65

561 Type

5 Way Solenoid Valve Namur Interface IP 65 Protection Degree

