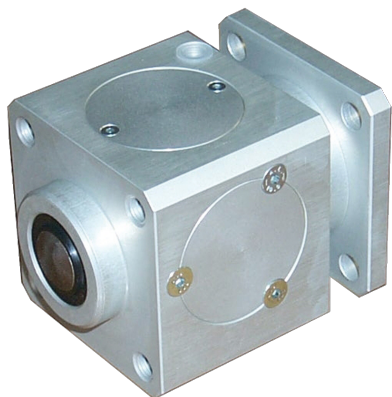


CILINDROS NEUMATICOS

BLOQUEO DE VÁSTAGO

BLOQUEO DE VASTAGO Ø80



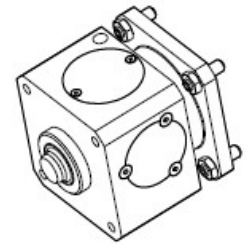
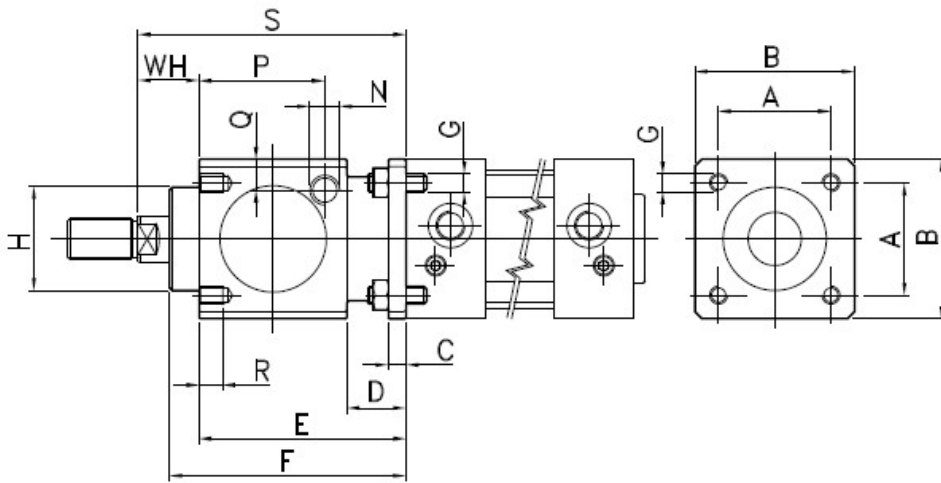
Referencia: **BS2001080**

Descripción

Colector alto o bajo de acero, para el alojamiento vertical de válvulas de las series 125 y 127, dispone de entrada centralizada roscada.

Características

| Referencia | Ø | A | B | C | D | E | F | G | H | WH | N | P | Q | R | S | T |
|------------|-----|------|-----|----|----|-----|------|-----|------|----|-------|-------|------|----|-----|-----|
| BS3001032 | 32 | 32,5 | 47 | 6 | 20 | 60 | 67,5 | M6 | 30 | 26 | 1/8"G | 33,25 | 9 | 8 | 86 | 60 |
| BS3001040 | 40 | 38 | 54 | 6 | 20 | 70 | 80 | M6 | 34,9 | 30 | 1/8"G | 42,5 | 9 | 8 | 86 | 60 |
| BS3001050 | 50 | 46,5 | 65 | 8 | 24 | 90 | 100 | M8 | 45 | 37 | 1/8"G | 59 | 17,5 | 12 | 127 | 90 |
| BS2001063 | 63 | 56,5 | 75 | 8 | 24 | 90 | 100 | M8 | 45 | 37 | 1/8"G | 59 | 17,5 | 12 | 127 | 90 |
| BS2001080 | 80 | 72 | 95 | 12 | 32 | 110 | 120 | M10 | 45 | 46 | 1/4"G | 69 | 17,5 | 16 | 156 | 110 |
| BS2001100 | 100 | 89 | 114 | 12 | 32 | 110 | 120 | M10 | 55 | 51 | 1/4"G | 69 | 20 | 16 | 161 | 110 |
| BS2001125 | 125 | 110 | 138 | 20 | 45 | 140 | 156 | M12 | 60 | 65 | 1/4"G | 84,5 | 19 | 20 | 205 | 140 |



| Ø | A | B | C | D | E | F | G | H | WH | N | P | Q | R | S | T | Peso in Kg. Weight in Kg. |
|-----|------|-----|----|----|-----|------|-----|------|----|-------|-------|------|----|-----|-----|------------------------------|
| 32 | 32.5 | 47 | 6 | 20 | 60 | 67.5 | M6 | 30 | 26 | 1/8"G | 33.25 | 9 | 8 | 86 | 60 | 0.400 |
| 40 | 38 | 54 | 6 | 20 | 70 | 80 | M6 | 34.9 | 30 | 1/8"G | 42.5 | 9 | 8 | 100 | 70 | 0.600 |
| 50 | 46.5 | 65 | 8 | 24 | 90 | 100 | M8 | 40 | 37 | 1/8"G | 58 | 12.5 | 12 | 127 | 90 | 1.100 |
| 63 | 56.5 | 75 | 8 | 24 | 90 | 100 | M8 | 45 | 37 | 1/8"G | 59 | 17.5 | 12 | 127 | 90 | 1.500 |
| 80 | 72 | 95 | 12 | 32 | 110 | 120 | M10 | 45 | 46 | 1/4"G | 69 | 17.5 | 16 | 156 | 110 | 2.600 |
| 100 | 89 | 114 | 12 | 32 | 110 | 120 | M10 | 55 | 51 | 1/4"G | 69 | 20 | 16 | 161 | 110 | 3.500 |
| 125 | 110 | 138 | 20 | 45 | 140 | 156 | M12 | 60 | 65 | 1/4"G | 84.5 | 19 | 20 | 205 | 140 | 6.500 |