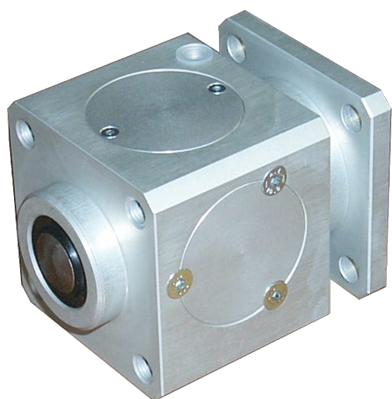


CILINDROS NEUMATICOS

BLOQUEO DE VÁSTAGO

BLOQUEO DE VASTAGO Ø32



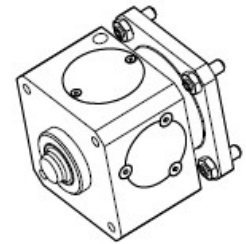
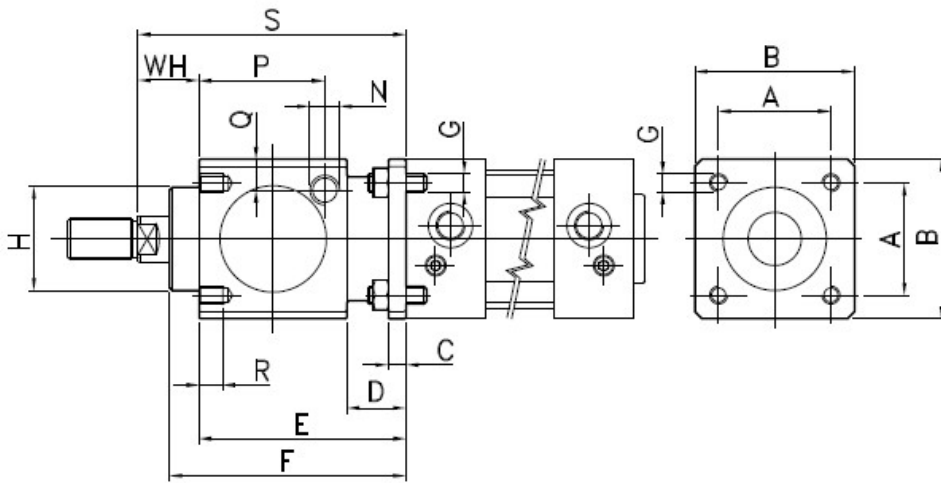
Referencia: **BS3001032**

Descripción

Colector alto o bajo de acero, para el alojamiento vertical de válvulas de las series 125 y 127, dispone de entrada centralizada roscada.

Características

Referencia	Ø	A	B	C	D	E	F	G	H	WH	N	P	Q	R	S	T
BS3001032	32	32,5	47	6	20	60	67,5	M6	30	26	1/8"G	33,25	9	8	86	60
BS3001040	40	38	54	6	20	70	80	M6	34,9	30	1/8"G	42,5	9	8	86	60
BS3001050	50	46,5	65	8	24	90	100	M8	45	37	1/8"G	59	17,5	12	127	90
BS2001063	63	56,5	75	8	24	90	100	M8	45	37	1/8"G	59	17,5	12	127	90
BS2001080	80	72	95	12	32	110	120	M10	45	46	1/4"G	69	17,5	16	156	110
BS2001100	100	89	114	12	32	110	120	M10	55	51	1/4"G	69	20	16	161	110
BS2001125	125	110	138	20	45	140	156	M12	60	65	1/4"G	84,5	19	20	205	140



Ø	A	B	C	D	E	F	G	H	WH	N	P	Q	R	S	T	Peso in Kg. Weight in Kg.
32	32.5	47	6	20	60	67.5	M6	30	26	1/8"G	33.25	9	8	86	60	0.400
40	38	54	6	20	70	80	M6	34.9	30	1/8"G	42.5	9	8	100	70	0.600
50	46.5	65	8	24	90	100	M8	40	37	1/8"G	58	12.5	12	127	90	1.100
63	56.5	75	8	24	90	100	M8	45	37	1/8"G	59	17.5	12	127	90	1.500
80	72	95	12	32	110	120	M10	45	46	1/4"G	69	17.5	16	156	110	2.600
100	89	114	12	32	110	120	M10	55	51	1/4"G	69	20	16	161	110	3.500
125	110	138	20	45	140	156	M12	60	65	1/4"G	84.5	19	20	205	140	6.500