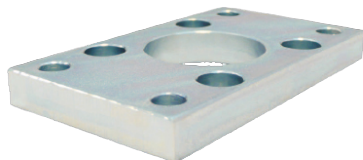


CILINDROS NEUMATICOS

ACCESORIOS ISO 15552

BRIDA PLANA ISO15552



Referencia: **CD/BR63**

Descripción

Brida plana

Características

Referencia	Ø mm	TG	ØD	ØFB	R	TF	L4	S	UF	E	MF
CD/BR32	32	32.5	30	7	32	64	5	M6X20	80	45	10
CD/BR40	40	38	35	9	36	72	5	M6X20	90	52	10
CD/BR50	50	46.5	40	9	45	90	6.5	M8X20	110	65	12
CD/BR63	63	56.5	45	9	50	100	6.5	M8X20	120	75	12
CD/BR80	80	72	45	12	63	126	9	M10X25	150	95	16
CD/BR100	100	89	55	14	75	150	9	M10X25	170	115	16
CD/BR120	125	110	60	16	90	180	10.5	M12X25	205	140	20
CD/BR160	160	140	65	18	115	230	9.5	M16X30	260	180	20
CD/BR200	200	175	75	22	135	270	12.5	M16X30	300	220	25

