

MINICILINDRI ISO 6432 Ø8-25 ISO 6432 MINI-CYLINDERS Ø8-25



Cilindri costruiti a norma ISO6432. Altamente resistenti con testate cianfrinate. Fornito con dado testata e dado sullo stelo. Esecuzione magnetica e non, ammortizzata e non. Disponibile anche a semplice effetto. Vasta scelta di accessori di fissaggio. A richiesta in conformità alla Direttiva ATEX.

ISO 6432 cylinders
Highly resistant with crimped covers. Supplied with cover and piston rod nuts. Magnetic and non-magnetic version, with or without adjustable cushioning. Available also single-acting. Wide range of mountings. On request in accordance with ATEX Directive.

VERSIONE VERSION

CSE		CSET	
CSEM		CSEMT	
CDE		CDEP	
CDEM		CDEMP	
CDEA		CDEAP	
CDEMA		CDEMAP	

CHIAVI DI CODIFICA CYLINDERS KEY CODE

CDEM	20	100	-	V
------	----	-----	---	---

Versione Version	Diametro Diameter	Corsa Stroke	Tipo costruttivo Design Type	Guarnizioni Seals
CSE Semplice effetto molla anteriore non magnetico Single acting front spring non magnetic	08	0...1000	- Versione standard Standard version	- Standard
CSEM Semplice effetto molla anteriore magnetico Single acting front spring magnetic	10		RR Versione corta, alimentazione radiale Short version, radial inlet	V Guarnizioni FKM FKM seals
CDE Doppio effetto non magnetico Double acting non magnetic	12		RA Versione corta, alimentazione assiale Short version, axial inlet	VG Guarnizione stelo FKM FKM rod seal
CDEM Doppio effetto magnetico Double acting magnetic	16		ES Versione antirotazione a stelo esagonale Non rotating version with hexagonal piston rod	
CDEA Doppio effetto con ammortizzo regolabile non magnetico Double acting with adjustable cushioning non magnetic	20			
CDEMA Doppio effetto con ammortizzo regolabile magnetico Double acting with adjustable cushioning magnetic	25			
CSET Semplice effetto molla posteriore non magnetico Single acting rear spring non magnetic				
CSEMT Semplice effetto molla posteriore magnetico Single acting rear spring magnetic				
CDEP Doppio effetto stelo passante non magnetico Double acting through rod non magnetic				
CDEMP Doppio effetto stelo passante magnetico Double acting through rod magnetic				
CDEAP Doppio effetto stelo passante con ammortizzo regolabile non magnetico Double acting through rod with adjustable cushioning non magnetic				
CDEMAP Doppio effetto stelo passante con ammortizzo regolabile magnetico Double acting through rod with adjustable cushioning magnetic				

INFORMAZIONI TECNICHE TECHNICAL INFORMATION

Testate Covers	Alluminio anodizzato Anodized Aluminium
Tubo Tube	Acciaio inox AISI304 AISI304 Stainless steel
Pistone Piston	Ottone Brass
Guarnizioni Seals	Ø8-10-12 poliuretano - NBR Ø16-20-25 poliuretano Ø8-10-12 polyurethane - NBR Ø16-20-25 polyurethane
Boccola guida Guiding bush	Bronzo sinterizzato Sintered bronze
Stelo Piston rod	Acciaio inox AISI303 AISI303 Stainless steel
Pressione MAX MAX pressure	10 bar
Temperatura di impiego Working temperature	Ø8-10-12 -20°C +80°C con aria secca Ø16-20-25 -35°C +80°C con aria secca Ø8-10-12 -20°C +80°C with dry air Ø16-20-25 -35°C +80°C with dry air
Fluido Working fluid	Aria compressa filtrata e lubrificata e non Filtered and lubricated or not compressed air

CORSE STANDARD CILINDRO DOPPIO EFFETTO STANDARD STROKES DOUBLE ACTING CYLINDER

Ø (mm)	Corse standard (mm) Standard strokes (mm)													
8	10	25	40	50	80	100								
10	10	25	40	50	80	100								
12	10	25	40	50	80	100	125	160	200					
16	10	25	40	50	80	100	125	160	200					
20	10	25	40	50	80	100	125	160	200	250	300	320		
25	10	25	40	50	80	100	125	160	200	250	300	320	400	500

CORSE STANDARD CILINDRO SEMPLICE EFFETTO STANDARD STROKES SINGLE ACTING CYLINDER

Ø (mm)	Corse standard (mm) Standard strokes (mm)		
8	10	25	50
10	10	25	50
12	10	25	50
16	10	25	50
20	10	25	50
25	10	25	50

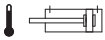
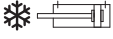
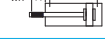




FORZE TEORICHE A 6 BAR THEORETICAL FORCES AT 6 BAR

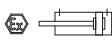
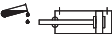
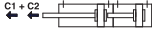



Ø (mm)	Forza di spinta (N) Thrust force (N)	Forza di trazione (N) Traction force (N)
8	30	23
10	47	40
12	68	51
16	121	104
20	189	158
25	295	247

FORZE TEORICHE DELLE MOLLE THEORETICAL SPRING FORCES

Ø (mm)	Molla anteriore Front spring						Molla posteriore Rear spring					
	Corse Stroke 10		Corse Stroke 25		Corse Stroke 50		Corse Stroke 10		Corse Stroke 25		Corse Stroke 50	
	F1(N)	F2(N)	F1(N)	F2(N)	F1(N)	F2(N)	F1(N)	F2(N)	F1(N)	F2(N)	F1(N)	F2(N)
8	4.1	4.6	3.4	4.6	2.2	4.6	5.5	6	4.8	6	3.6	6
10	4.1	4.6	3.4	4.6	2.2	4.6	5	6.2	3.3	6.2	-	-
12	5.6	6	5.5	6	4.1	6	13	14.2	11.3	14.2	8.5	14.2
16	19.2	21.5	15.7	21.5	9.8	21.5	19	20.7	16.3	20.7	12	20.7
20	20.4	22.5	17.3	22.5	11.7	22.5	57.2	61.5	50.7	61.5	39.8	61.5
25	17.5	18.8	15.6	18.8	12.4	18.8	28.5	30.6	25.3	30.6	19.8	30.6

VARIANTI VARIANTS

Simbolo Symbol	Caratteristiche Features
	Resistente alle alte temperature -10...+150°C Heat-resistant -10...+150°C
	Resistente alle basse temperature -40...+80°C Low temperature resistant -40...+80°C
	Stelo prolungato Piston rod extension
	Basso attrito Low friction
	Stelo in acciaio inox Stainless steel piston rod
	Lubrificazione FDA FDA lubrication
	Filettature e steli su richiesta Custom made thread or piston rod

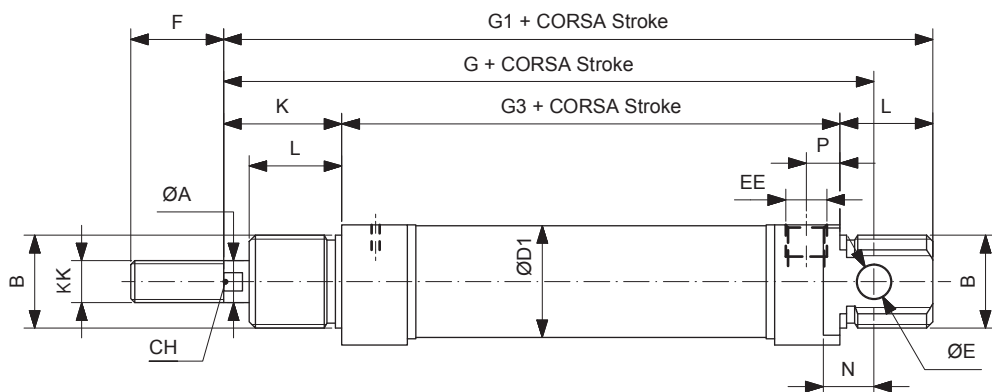
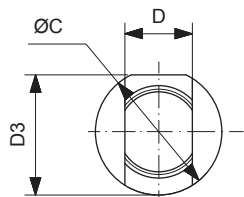
Simbolo Symbol	Caratteristiche Features
	Certificazione ATEX ATEX certification
	Guarnizione stelo ad elevata resistenza chimica Rod seal with increased chemical resistance
	Configurazione tandem a più posizioni Multi position configuration
	Configurazione tandem a doppia spinta Double thrust tandem configuration
	Configurazione tandem contrapposti anteriore Front opposed tandem configuration
	Configurazione tandem contrapposti posteriore Rear opposed tandem configuration

MINICILINDRI ISO 6432 Ø8-25 ISO 6432 MINI-CYLINDERS Ø8-25

SEMPLICE EFFETTO SINGLE ACTING

CSEØ/...

CSEMØ/...

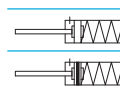
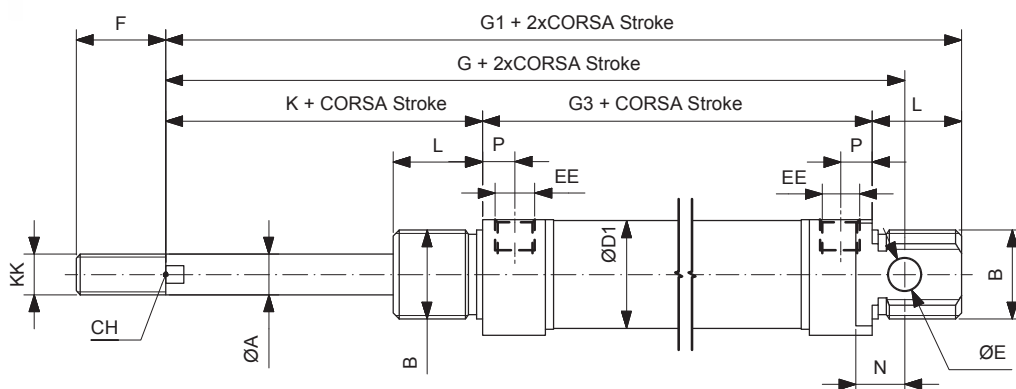
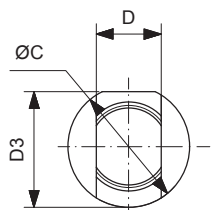


Ø	ØA	B	ØC	CH	D	ØD1	D3	ØE	EE	F	G	G1	G3	K	KK	L	N	P
8	4	M12x1.25	16	/	8	9.27	15	4	M5	12	64	74	46	16	M4x0.7	12	6	5
10	4	M12x1.25	16	/	8	11.27	15	4	M5	12	64	74	46	16	M4x0.7	12	6	5
12	6	M16x1.5	19	5	12	13.27	18	6	M5	16	75	88	48	22	M6x1	18	9	5
16	6	M16x1.5	19	5	12	17.27	18	6	M5	16	82	93	53	22	M6x1	18	9	4.5
20	8	M22x1.5	27	7	16	21.27	25.5	8	1/8"G	20	95	111	67	24	M8x1.25	20	12	8
25	10	M22x1.5	30	9	16	26.5	28.5	8	1/8"G	22	104	118	68	28	M10x1.25	22	12	8

SEMPLICE EFFETTO MOLLA POSTERIORE SINGLE ACTING REAR SPRING

CSETØ/...

CSEMTØ/...

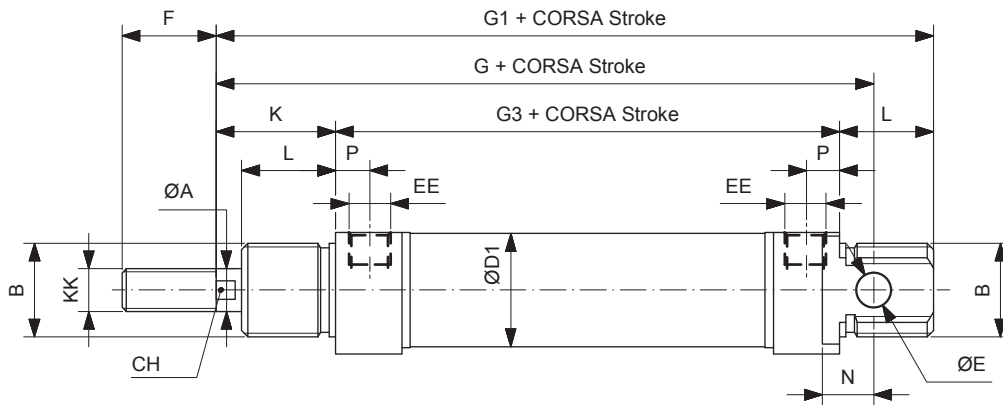
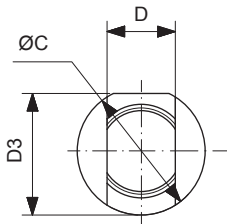


Ø	ØA	B	ØC	CH	D	ØD1	D3	ØE	EE	F	G	G1	G3	K	KK	L	N	P
8	4	M12x1.25	16	/	8	9.27	15	4	M5	12	82	92	64	16	M4x0.7	12	6	5
10	4	M12x1.25	16	/	8	11.27	15	4	M5	12	89.5	99.5	71.5	16	M4x0.7	12	6	5
12	6	M16x1.5	19	5	12	13.27	18	6	M5	16	97.5	110.5	70.5	22	M6x1	18	9	5
16	6	M16x1.5	19	5	12	17.27	18	6	M5	16	111	122	82	22	M6x1	18	9	4.5
20	8	M22x1.5	27	7	16	21.27	25.5	8	1/8"G	20	126.5	142.5	98.5	24	M8x1.25	20	12	8
25	10	M22x1.5	30	9	16	26.5	28.5	8	1/8"G	22	135.5	149.5	99.5	28	M10x1.25	22	12	8

DOPPIO EFFETTO
DOUBLE ACTING

CDEØ/...

CDEMØ/...

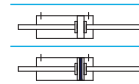
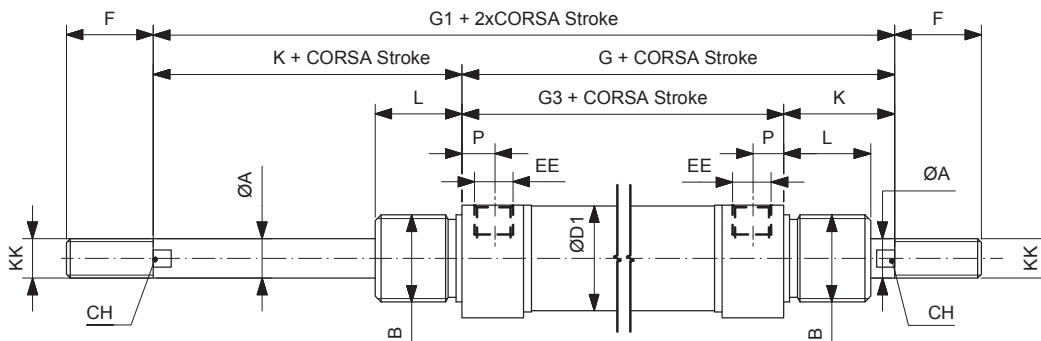
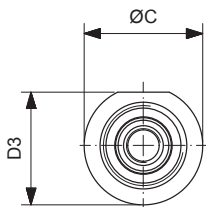


Ø	ØA	B	ØC	CH	D	ØD1	D3	ØE	EE	F	G	G1	G3	K	KK	L	N	P
8	4	M12x1.25	16	/	8	9.27	15	4	M5	12	64	74	46	16	M4x0.7	12	6	5
10	4	M12x1.25	16	/	8	11.27	15	4	M5	12	64	74	46	16	M4x0.7	12	6	5
12	6	M16x1.5	19	5	12	13.27	18	6	M5	16	75	88	48	22	M6x1	18	9	5
16	6	M16x1.5	19	5	12	17.27	18	6	M5	16	82	93	53	22	M6x1	18	9	4.5
20	8	M22x1.5	27	7	16	21.27	25.5	8	1/8"G	20	95	111	67	24	M8x1.25	20	12	8
25	10	M22x1.5	30	9	16	26.5	28.5	8	1/8"G	22	104	118	68	28	M10x1.25	22	12	8

DOPPIO EFFETTO PASSANTE
DOUBLE ACTING THROUGH PISTON ROD

CDEPØ/...

CDEMPØ/...



Ø	ØA	B	ØC	CH	ØD1	D3	EE	F	G	G1	G3	K	KK	L	P
8	4	M12x1.25	16	/	9.27	15	M5	12	62	78	46	16	M4x0.7	12	5
10	4	M12x1.25	16	/	11.27	15	M5	12	62	78	46	16	M4x0.7	12	5
12	6	M16x1.5	19	5	13.27	18	M5	16	70	92	48	22	M6x1	18	5
16	6	M16x1.5	19	5	17.27	18	M5	16	75	97	53	22	M6x1	18	4.5
20	8	M22x1.5	27	7	21.27	25.5	1/8"G	20	91	115	67	24	M8x1.25	20	8
25	10	M22x1.5	30	9	26.5	28.5	1/8"G	22	96	124	68	28	M10x1.25	22	8

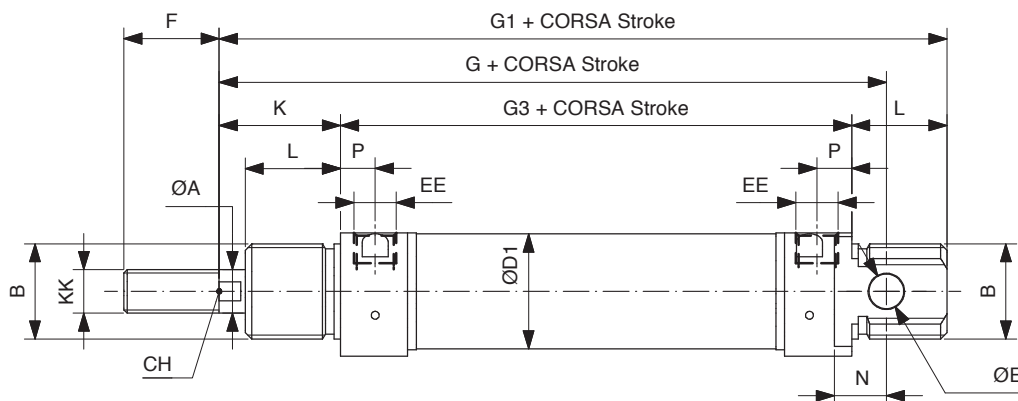
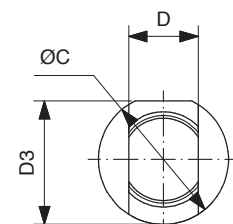
Ø8-10-12 disponibili solo non magnetici
Ø8-10-12 only available without magnet

MINICILINDRI ISO 6432 Ø8-25 ISO 6432 MINI-CYLINDERS Ø8-25

DOPPIO EFFETTO AMMORTIZZATO
DOUBLE ACTING CUSHIONED

CDEAØ/...

CDEMAØ/...

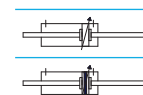
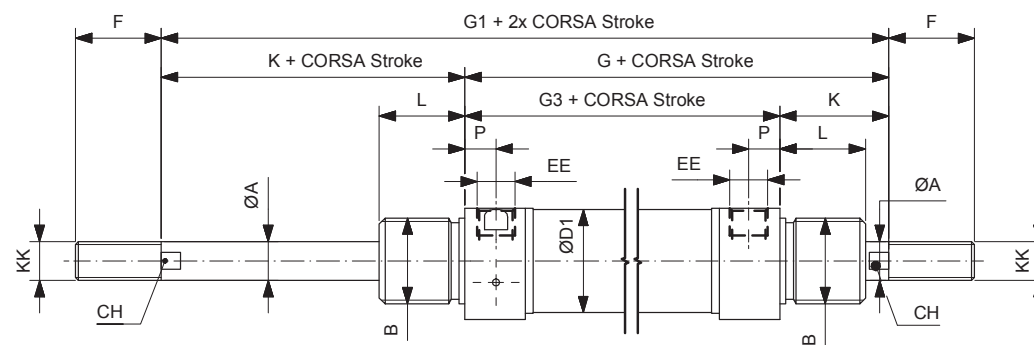
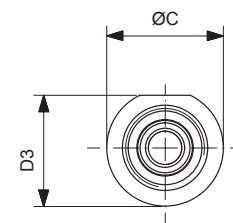


Ø	ØA	B	ØC	CH	D	ØD1	D3	ØE	EE	F	G	G1	G3	K	KK	L	N	P
16	6	M16x1.5	21	5	12	17.27	20	6	M5	16	82	93	55	22	M6x1	17	9	5.5
20	8	M22x1.5	27	7	16	21.27	25.5	8	1/8"G	20	95	111	67	24	M8x1.25	20	12	8
25	10	M22x1.5	30	9	16	26.5	28.5	8	1/8"G	22	104	118	68	28	M10x1.25	22	12	8

DOPPIO EFFETTO AMMORTIZZATO PASSANTE
DOUBLE ACTING CUSHIONED THROUGH PISTON ROD

CDEAPØ/...

CDEMAPØ/...

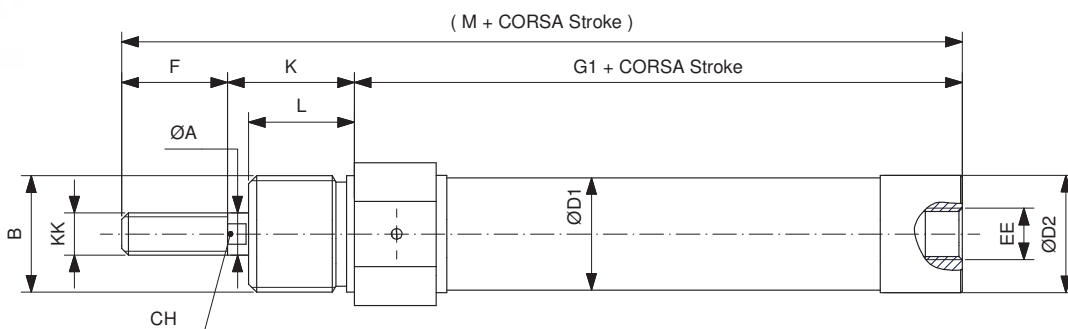
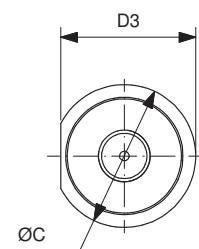


Ø	ØA	B	ØC	CH	ØD1	D3	EE	F	G	G1	G3	K	KK	L	P
16	6	M16x1.5	21	5	17.27	20	M5	16	76	97	55	22	M6x1	17	5.5
20	8	M22x1.5	27	7	21.27	25.5	1/8"G	20	91	115	67	24	M8x1.25	20	8
25	10	M22x1.5	30	9	26.5	28.5	1/8"G	22	96	124	68	28	M10x1.25	22	8

SERIE CORTA RA SEMPLICE EFFETTO
SHORT SERIES RA SINGLE ACTING

CSEØ/...RA

CSEMØ/...RA

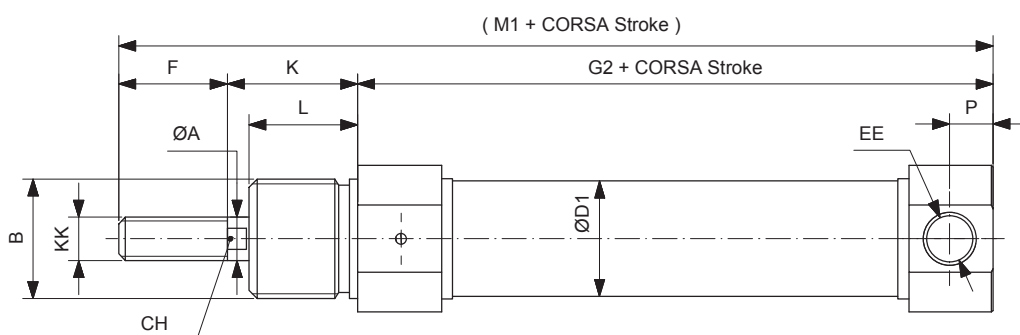
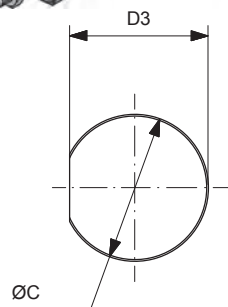


Ø	ØA	B	ØC	CH	ØD1	ØD2	D3	EE	F	G1	K	KK	L	M
16	6	M16x1.5	19	5	17.27	17.2	18	M5	16	52	22	M6x1	18	90
20	8	M22x1.5	27	7	21.27	22.2	25.5	1/8"G	20	65	24	M8x1.25	20	109
25	10	M22x1.5	30	9	26.5	27	28.5	1/8"G	22	66	28	M10x1.25	22	116

SERIE CORTA RR SEMPLICE EFFETTO
SHORT SERIES RR SINGLE ACTING

CSEØ/...RR

CSEMØ/...RR



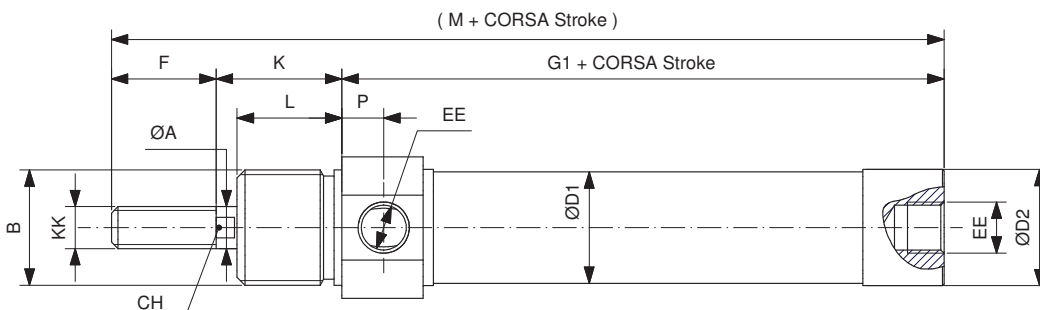
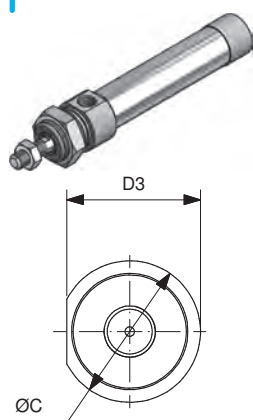
Ø	ØA	B	ØC	CH	ØD1	D3	EE	F	G2	K	KK	L	M1	P
16	6	M16x1.5	19	5	17.27	18	M5	16	52.5	22	M6x1	18	90.5	4.5
20	8	M22x1.5	27	7	21.27	25.5	1/8"G	20	67	24	M8x1.25	20	111	8
25	10	M22x1.5	30	9	26.5	28.5	1/8"G	22	68	28	M10x1.25	22	118	8

MINICILINDRI ISO 6432 Ø8-25 ISO 6432 MINI-CYLINDERS Ø8-25

SERIE CORTA RA DOPPIO EFFETTO SHORT SERIES RA DOUBLE ACTING

CDEØ/...RA

CDEMØ/...RA

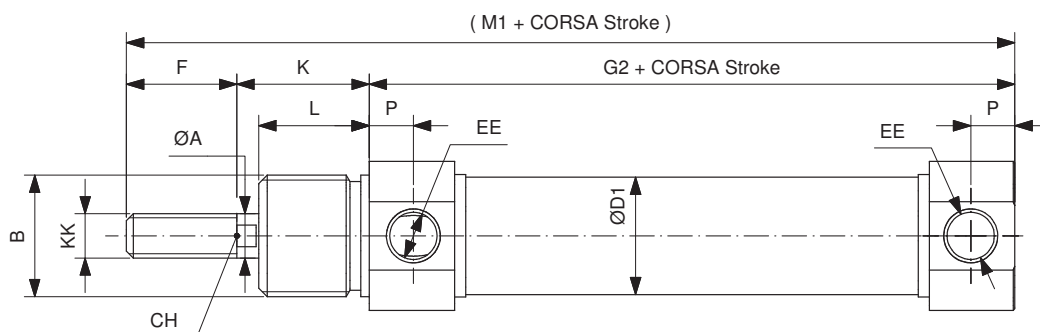
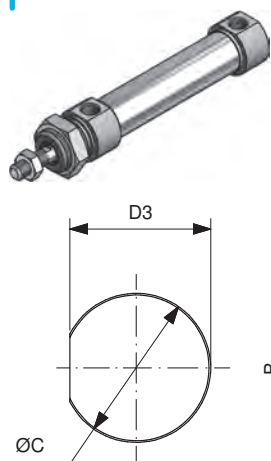


Ø	ØA	B	ØC	CH	ØD1	ØD2	D3	EE	F	G1	K	KK	L	M	P
16	6	M16x1.5	19	5	17.27	17.2	18	M5	16	52	22	M6x1	18	90	4.5
20	8	M22x1.5	27	7	21.27	22.2	25.5	1/8"G	20	65	24	M8x1.25	20	109	8
25	10	M22x1.5	30	9	26.5	27	28.5	1/8"G	22	66	28	M10x1.25	22	116	8

SERIE CORTA RR DOPPIO EFFETTO SHORT SERIES RR DOUBLE ACTING

CDEØ/...RR

CDEMØ/...RR

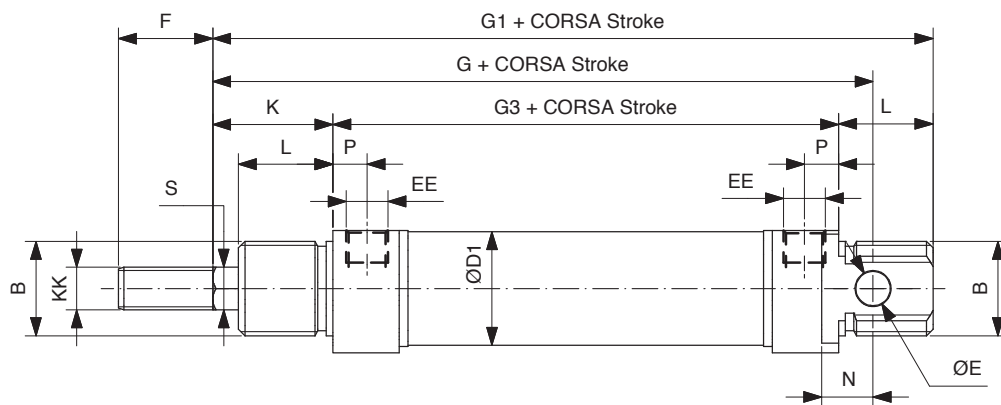
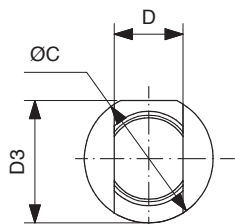


Ø	ØA	B	ØC	CH	ØD1	D3	EE	F	G2	K	KK	L	M1	P
16	6	M16x1.5	19	5	17.27	18	M5	16	52.5	22	M6x1	18	90.5	4.5
20	8	M22x1.5	27	7	21.27	25.5	1/8"G	20	67	24	M8x1.25	20	111	8
25	10	M22x1.5	30	9	26.5	28.5	1/8"G	22	68	28	M10x1.25	22	118	8

DOPPIO EFFETTO ANTIROTAZIONE ESAGONALE
DOUBLE ACTING NON-ROTATING HEXAGONAL

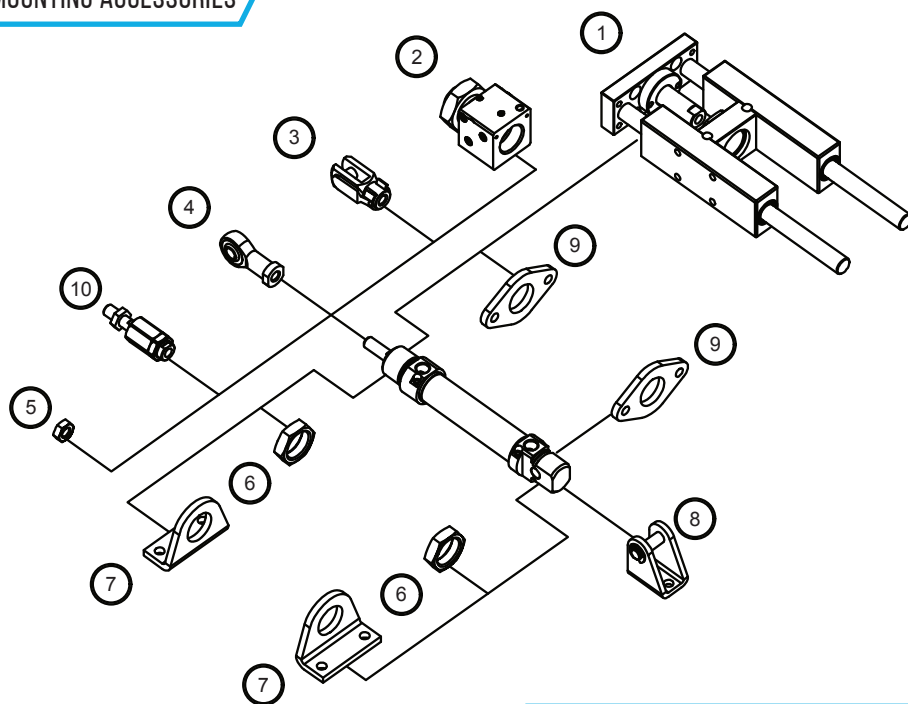
CDEØ/...ES

CDEMØ/...ES



Ø	B	ØC	D	ØD1	D3	ØE	EE	F	G	G1	G3	K	KK	L	N	P	S
16	M16x1.5	19	12	17.27	18	6	M5	16	82	93	53	22	M6x1	18	9	4.5	6
20	M22x1.5	27	16	21.27	25.5	8	1/8"G	20	95	111	67	24	M8x1.25	20	12	8	8
25	M22x1.5	30	16	26.5	28.5	8	1/8"G	22	104	118	68	28	M10x1.25	22	12	8	10

ACCESSORI DI FISSAGGIO
MOUNTING ACCESSORIES



	Descrizione Description	Acciaio Steel version	Acciaio inox Stainless steel
1	Unità di guida / Guide unit	122	-
2	Bloccastelo / Rod lock	126	-
3	Forcella / Clevis	131	147
4	Testa a snodo / Rod end	132	148
5	Dado per stelo / Piston rod nut	130	146
6	Dado testata / Cover nut	130	146
7	Piedino / Foot (MS3)	133	149
8	Cerniera / Hinge (MP3)	133	148
9	Flangia / Flange (MF8)	134	149
10	Giunto autoallineante / Self-aligning joint	131	-

CILINDRI TONDI CP04 Ø32-40 CP04 ROUND CYLINDERS Ø32-40



Cilindri tonde Ø32-40.

Altamente resistenti con testate cianfrinate e camicia in acciaio inox.

Disponibili in versione magnetica o non, con o senza ammortizzo regolabile, a stelo singolo o passante.

Ø32-40 round cylinders.

Highly resistant with crimped covers and stainless steel barrel. Available with or without magnet, with or without adjustable cushioning, single or through piston rod.

VERSIONE VERSION

CDE		CDEP	
CDEM		CDEMP	
CDEA		CDEAP	
CDEMA		CDEMAP	

INFORMAZIONI TECNICHE TECHNICAL INFORMATION

Testate Covers	Alluminio anodizzato Anodized Aluminium
Tubo Tube	Acciaio inox AISI304 AISI304 Stainless steel
Pistone Piston	Alluminio Aluminium
Guarnizioni Seals	Poliuretano - NBR Polyurethane - NBR
Boccola guida Guiding bush	Bronzo sinterizzato Sintered bronze
Stelo Piston rod	Acciaio inox AISI303 AISI303 Stainless steel
Pressione MAX MAX pressure	10 bar
Temperatura di impiego Working temperature	-20°C +80°C con aria secca -20°C +80°C with dry air
Fluido Working fluid	Aria compressa filtrata e lubrificata e non Filtered and lubricated or not compressed air

CHIAVI DI CODIFICA CYLINDERS KEY CODE

Versione Version		Diametro Diameter	Corsa Stroke	Tipo costruttivo Design Type	Guarnizioni Seals
CDEMA		32	100	D	VG
CDE	Doppio effetto non magnetico Double acting non magnetic	32 40	0...1000	D	- Standard
CDEM	Doppio effetto magnetico Double acting magnetic			DRR	V Guarnizioni FKM FKM seals
CDEA	Doppio effetto con ammortizzo regolabile non magnetico Double acting with adjustable cushioning non magnetic			DRA	VG Guarnizione stelo FKM FKM rod seal
CDEMA	Doppio effetto con ammortizzo regolabile magnetico Double acting with adjustable cushioning magnetic				
CDEP	Doppio effetto stelo passante non magnetico Double acting through rod non magnetic				
CDEMP	Doppio effetto stelo passante magnetico Double acting through rod magnetic				
CDEAP	Doppio effetto stelo passante con ammortizzo regolabile non magnetico Double acting through rod with adjustable cushioning non magnetic				
CDEMAP	Doppio effetto stelo passante con ammortizzo regolabile magnetico Double acting through rod with adjustable cushioning magnetic				














CORSE STANDARD STANDARD STROKES

Ø (mm)	Corse standard (mm) Standard strokes (mm)										
	10	25	40	50	80	100	125	160	200	250	300
32	10	25	40	50	80	100	125	160	200	250	300
40	10	25	40	50	80	100	125	160	200	250	300

FORZE TEORICHE A 6 BAR THEORETICAL FORCES AT 6 BAR

Ø (mm)	Forza di spinta (N) Thrust force (N)	Forza di trazione (N) Traction force (N)
32	482	414
40	754	633

VARIANTI VARIANTS

Simbolo Symbol	Caratteristiche Features	Simbolo Symbol	Caratteristiche Features
	Resistente alle alte temperature -10...+150°C Heat-resistant -10...+150°C		Filettature e steli su richiesta Custom made thread or piston rod
	Resistente alle basse temperature -40...+80°C Low temperature resistant -40...+80°C		Guarnizione stelo ad elevata resistenza chimica Rod seal with increased chemical resistance
	Stelo prolungato Piston rod extension		Configurazione tandem a più posizioni Multi position configuration
	Basso attrito Low friction		Configurazione tandem a doppia spinta Double thrust tandem configuration
	Raschia stelo duro in poliestere Hard wiper in polyester		Configurazione tandem contrapposti anteriore Front opposed tandem configuration
	Stelo in acciaio inox Stainless steel piston rod		Configurazione tandem contrapposti posteriore Rear opposed tandem configuration
	Lubrificazione FDA FDA lubrication		

CILINDRI TONDI CP04 Ø32-40 CP04 ROUND CYLINDERS Ø32-40

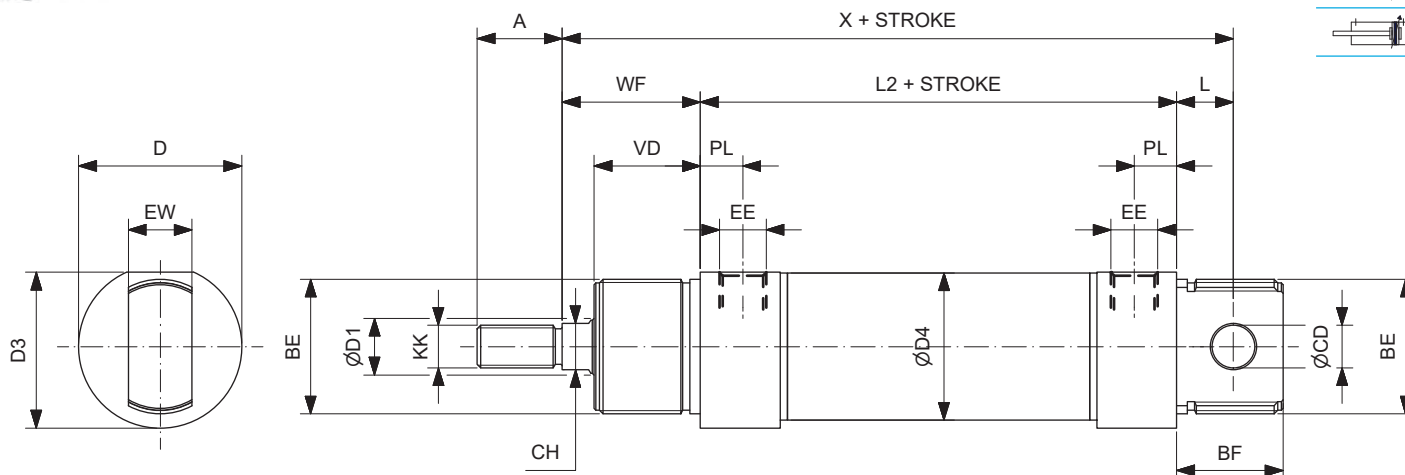
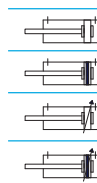
DOPPIO EFFETTO
DOUBLE ACTING

CDEØ/...D

CDEMØ/...D

CDEAØ/...D

CDEMAØ/...D



Ømm	ØD1	KK	A	CH	BE	WF	VD	PL	EE	X	L2	L	ØD4	ØCD	BF	D	EW	D3
32	12	M10X1.25	22	10	M30X1.5	34	26	9	1/8"G	117.5	69.5	14	33.6	10	26	38	16	36.5
40	16	M12X1.25	24	13	M38X1.5	39	30	12	1/4"G	139.5	84.5	16	41.6	12	30	46	18	44

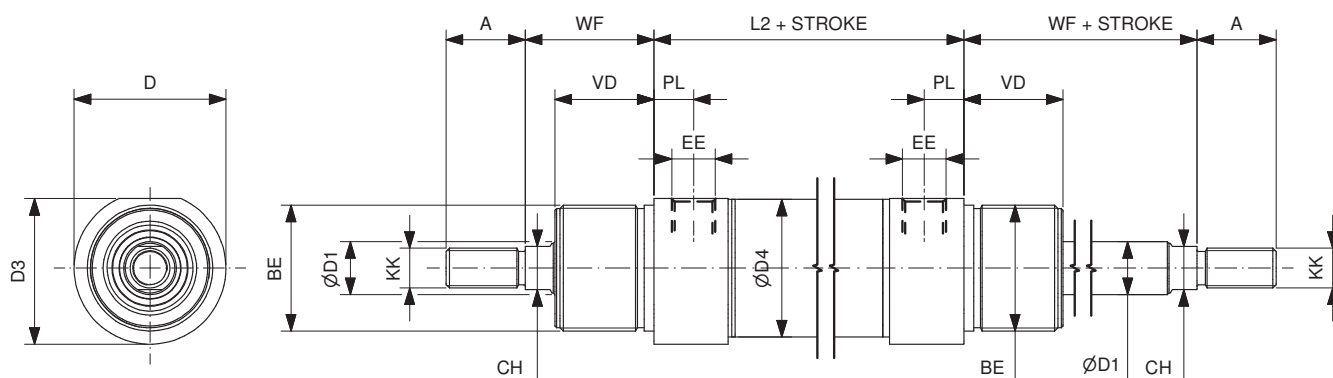
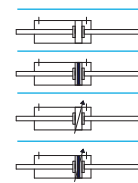
DOPPIO EFFETTO PASSANTE
DOUBLE ACTING THROUGH PISTON ROD

CDEPØ/...D

CDEMPØ/...D

CDEAPØ/...D

CDEMAPØ/...D

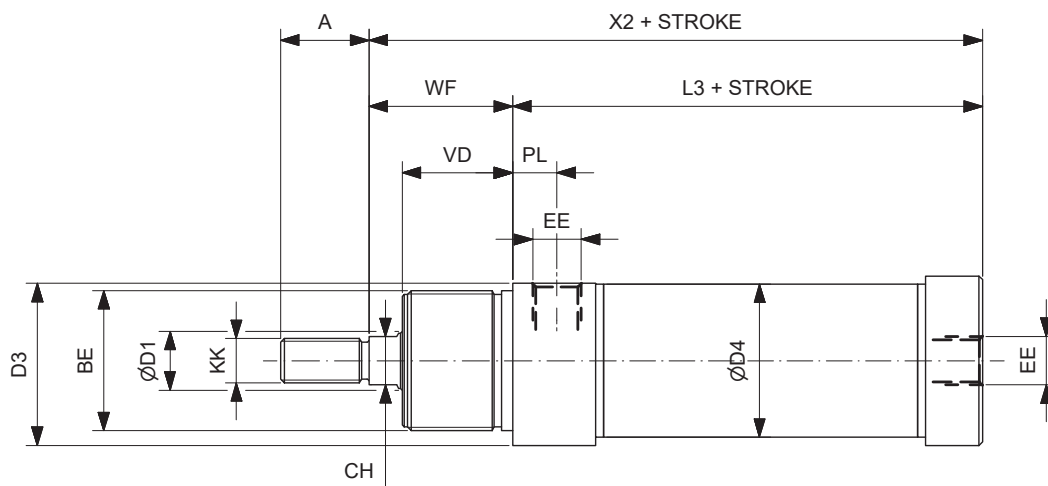
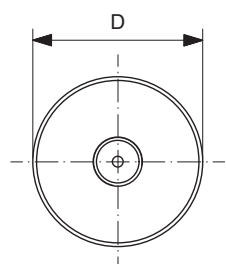


Ømm	ØD1	KK	A	CH	BE	WF	VD	PL	EE	L2	ØD4	D	D3
32	12	M10X1.25	22	10	M30X1.5	34	26	9	1/8"G	69.5	33.6	38	36.5
40	16	M12X1.25	24	13	M38X1.5	39	30	12	1/4"G	84.5	41.6	46	44

SERIE CORTA RA DOPPIO EFFETTO
SHORT SERIES RA DOUBLE ACTING

CDEØ/...DRA

CDEMØ/...DRA



Ø mm	ØD1	KK	A	CH	BE	WF	VD	PL	EE	X2	L3	ØD4	D	D3
32	12	M10X1.25	22	10	M30X1.5	34	26	9	1/8"G	99.5	65.5	33.6	38	36.5
40	16	M12X1.25	24	13	M38X1.5	39	30	12	1/4"G	116.5	77.5	41.6	46	44

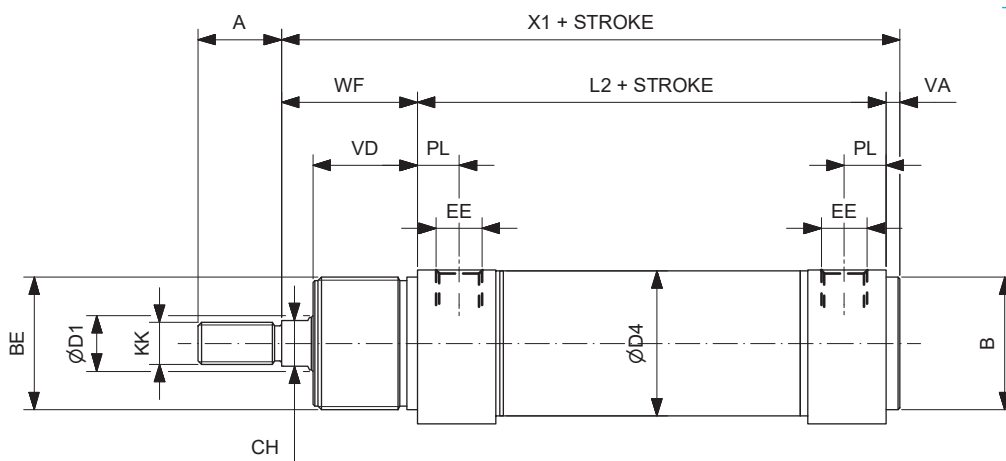
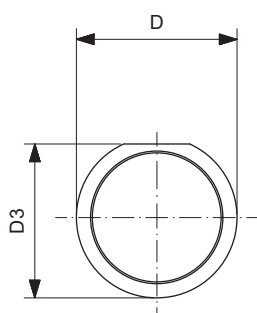
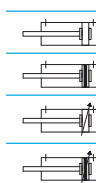
SERIE CORTA RR DOPPIO EFFETTO
SHORT SERIES RR DOUBLE ACTING

CDEØ/...DRR

CDEMØ/...DRR

CDEAØ/...DRR

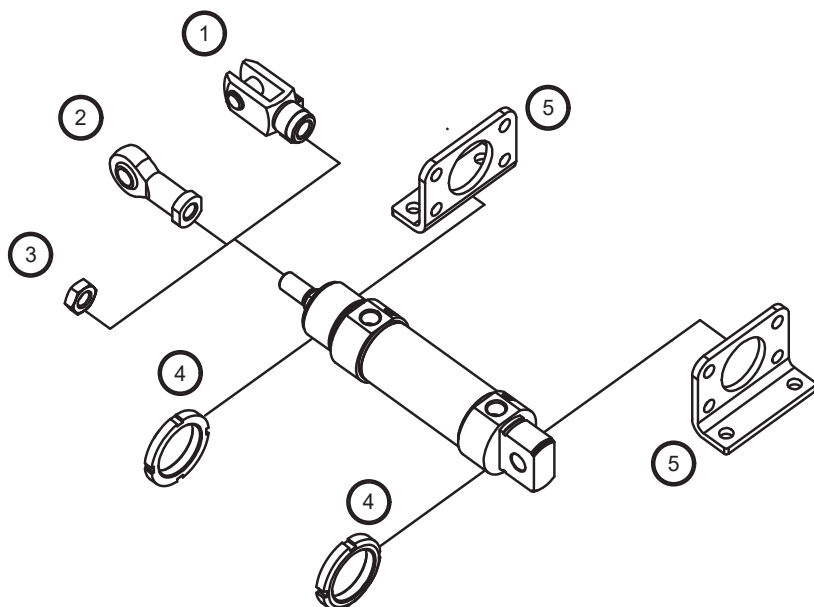
CDEMAØ/...DRR



Ø mm	ØD1	KK	A	B	CH	BE	WF	VD	VA	PL	EE	X1	L2	ØD4	D	D3
32	12	M10X1.25	22	30	10	M30X1.5	34	26	3	9	1/8"G	106.5	69.5	33.6	38	36.5
40	16	M12X1.25	24	38	13	M38X1.5	39	30	4	12	1/4"G	127.5	84.5	41.6	46	44

CILINDRI TONDI CP04 Ø32-40 CP04 ROUND CYLINDERS Ø32-40

ACCESSORI DI FISSAGGIO MOUNTING ACCESSORIES



Descrizione Description	Acciaio Steel	Acciaio inox Stainless steel
1 Forcella / Clevis	131	147
2 Testa a snodo / Rod ends	132	148
3 Dado per stelo / Piston rod nut	130	146
4 Ghiera / Slotted nut	130	147
5 Piedino flangia / Foot flange	144	154
6 Giunto autoallineante / Self-aligning joint	131	-

MINICILINDRI INOX ISO 6432 Ø16-25 ISO 6432 STAINLESS STEEL MINI-CYLINDERS Ø16-25



Cilindri costruiti a norma ISO6432

Altamente resistenti con testate cianfrinate e interamente realizzati in acciaio inox. Disponibili in versione magnetica o non, con o senza ammortizzo regolabile, doppio effetto, a stelo singolo o passante. Ampia gamma di accessori.

Su richiesta sono fornibili in varie esecuzioni speciali ed in versione conforme alla direttiva 2014/34/UE ATEX.

ISO 6432 cylinders

Highly resistant with crimped covers and entirely built in stainless steel. Available with or without magnet, with or without adjustable cushioning, double acting, single or through piston rod.

Wide range of mounting accessories. Special versions are available. On request complaint with 2014/34/UE ATEX directive.

VERSIONE VERSION

CDE		CDEP	
CDEM		CDEMP	
CDEA		CDEAP	
CDEMA		CDEMAP	

INFORMAZIONI TECNICHE TECHNICAL INFORMATION

Testate Covers	Acciaio inox AISI304 AISI304 Stainless steel
Tubo Tube	Acciaio inox AISI304 AISI304 Stainless steel
Pistone Piston	Ottone Brass
Guarnizioni Seals	Poliuretano Polyurethane
Boccola guida Guiding bush	Bronzo sinterizzato Sintered bronze
Stelo Piston rod	Acciaio inox AISI316 AISI316 Stainless steel
Pressione MAX MAX pressure	10 bar
Temperatura di impiego Working temperature	-35°C +80°C con aria secca -35°C +80°C with dry air
Fluido Working fluid	Aria compressa filtrata e lubrificata e non Filtered and lubricated or not compressed air

CHIAVI DI CODIFICA CYLINDERS KEY CODE

Versione Version		Diametro Diameter	Corsa Stroke	Tipo costruttivo Design Type
CDEMI		20	100	V
CDEI	Doppio effetto non magnetico Double acting non magnetic	16	0...1000	- Standard Standard
CDEMI	Doppio effetto magnetico Double acting magnetic	20		V Guarnizioni FKM FKM seals
CDEAI	Doppio effetto con ammortizzo regolabile non magnetico Double acting with adjustable cushioning non magnetic	25		VG Guarnizione stelo FKM FKM rod seal
CDEMAI	Doppio effetto con ammortizzo regolabile magnetico Double acting with adjustable cushioning magnetic			
CDEPI	Doppio effetto stelo passante non magnetico Double acting through rod non magnetic			
CDEMPI	Doppio effetto stelo passante magnetico Double acting through rod magnetic			
CDEAPI	Doppio effetto stelo passante con ammortizzo regolabile non magnetico Double acting through rod with adjustable cushioning non magnetic			
CDEMAPI	Doppio effetto stelo passante con ammortizzo regolabile magnetico Double acting through rod with adjustable cushioning magnetic			

Nota: versioni con ammortizzo regolabile disponibili solo nei diametri 20 e 25.

Note: versions with adjustable cushioning are available for diameter 20 and 25 only.






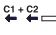




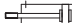

CORSE STANDARD STANDARD STROKES

Ø (mm)	Corse standard (mm) Standard strokes (mm)													
16	10	25	40	50	80	100	125	160	200					
20	10	25	40	50	80	100	125	160	200	250	300	320		
25	10	25	40	50	80	100	125	160	200	250	300	320	400	500

FORZE TEORICHE A 6 BAR THEORETICAL FORCES AT 6 BAR

Ø (mm)	Forza di spinta (N) Thrust force (N)	Forza di trazione (N) Traction force (N)
16	121	104
20	189	158
25	294	247

VARIANTI VARIANTS

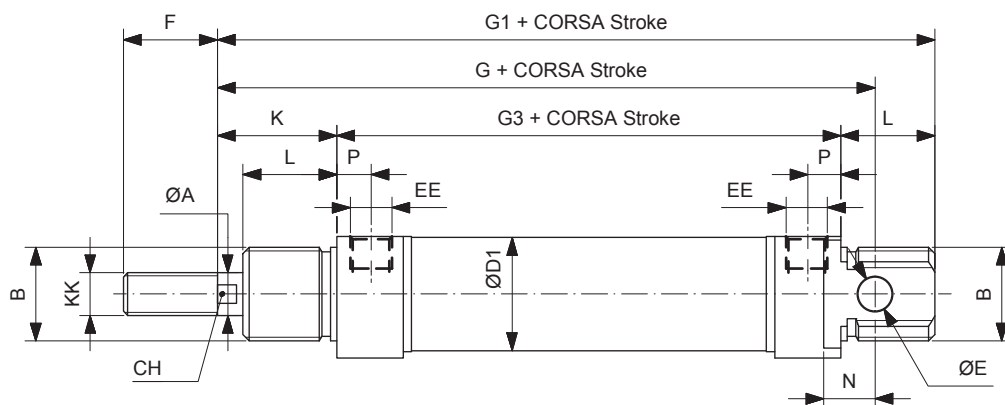
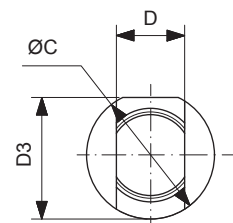
Simbolo Symbol	Caratteristiche Features	Simbolo Symbol	Caratteristiche Features
	Resistente alle alte temperature -10...+150°C Heat-resistant -10...+150°C		Certificazione ATEX ATEX certification
	Resistente alle basse temperature -40...+80°C Low temperature resistant -40...+80°C		Guarnizione stelo ad elevata resistenza chimica Rod seal with increased chemical resistance
	Stelo prolungato Piston rod extension		Configurazione tandem a più posizioni Multi position configuration
	Basso attrito Low friction		Configurazione tandem a doppia spinta Double thrust tandem configuration
	Lubrificazione FDA FDA lubrication		Configurazione tandem contrapposti anteriore Front opposed tandem configuration
	Filettature e steli su richiesta Custom made thread or piston rod		Configurazione tandem contrapposti posteriore Rear opposed tandem configuration

MINICILINDRI INOX ISO 6432 Ø16-25 ISO 6432 STAINLESS STEEL MINI-CYLINDERS Ø16-25

DOPPIO EFFETTO
DOUBLE ACTING

CDEIØ/...

CDEMIØ/...

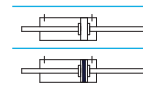
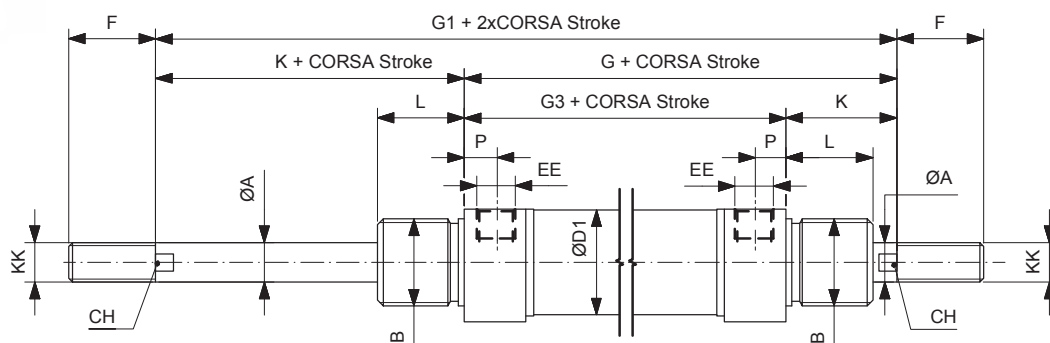
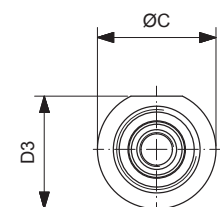


Ømm	ØA	B	ØC	CH	D	ØD1	D3	ØE	EE	F	G	G1	G3	K	KK	L	N	P
16	6	M16x1.5	19	5	12	17.27	18	6	M5	16	82	93	53	22	M6x1	18	9	4.5
20	8	M22x1.5	27	7	16	21.27	25.5	8	1/8"G	20	95	111	67	24	M8x1.25	20	12	8
25	10	M22x1.5	30	9	16	26.5	28.5	8	1/8"G	22	104	118	68	28	M10x1.25	22	12	8

DOPPIO EFFETTO PASSANTE
DOUBLE ACTING THROUGH PISTON ROD

CDEPIØ/...

CDEMPIØ/...

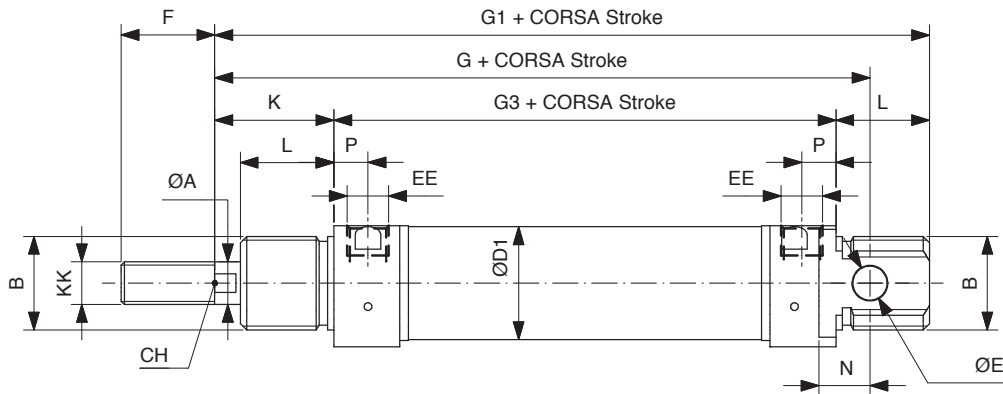
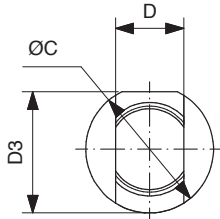


Ømm	A	B	ØC	CH	ØD1	D3	EE	F	G	G1	G3	K	KK	L	P
16	6	M16x1.5	19	5	17.27	18	M5	16	75	97	53	22	M6x1	18	4.5
20	8	M22x1.5	27	7	21.27	25.5	1/8"G	20	91	115	67	24	M8x1.25	20	8
25	10	M22x1.5	30	9	26.5	28.5	1/8"G	22	96	124	68	28	M10x1.25	22	8

DOPPIO EFFETTO AMMORTIZZATO
DOUBLE ACTING CUSHIONED

CDEAIØ/...

CDEMAIØ/...

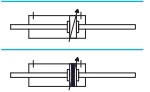
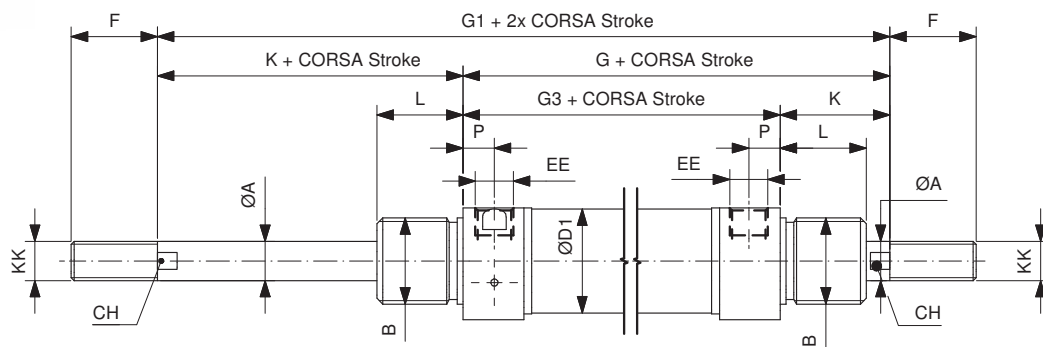
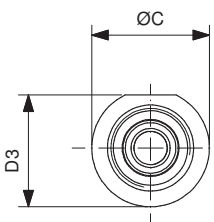


Ømm	ØA	B	ØC	CH	D	ØD1	D3	ØE	EE	F	G	G1	G3	K	KK	L	N	P
20	8	M22x1.5	27	7	16	21.27	25.5	8	1/8"G	20	95	111	67	24	M8x1.25	20	12	8
25	10	M22x1.5	30	9	16	26.5	28.5	8	1/8"G	22	104	118	68	28	M10x1.25	22	12	8

DOPPIO EFFETTO AMMORTIZZATO PASSANTE
DOUBLE ACTING CUSHIONED THROUGH PISTON ROD

CDEAPIØ/...

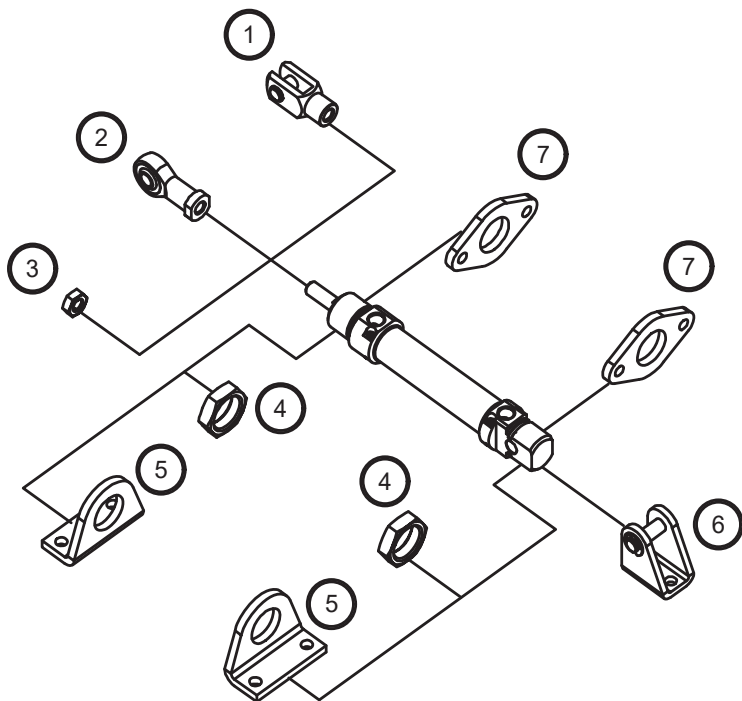
CDEMAPIØ/...



Ømm	ØA	B	ØC	CH	ØD1	D3	EE	F	G	G1	G3	K	KK	L	P
20	8	M22x1.5	27	7	21.27	25.5	1/8"G	20	91	115	67	24	M8x1.25	20	8
25	10	M22x1.5	30	9	26.5	28.5	1/8"G	22	96	124	68	28	M10x1.25	22	8

MINICILINDRI INOX ISO 6432 Ø16-25 ISO 6432 STAINLESS STEEL MINI-CYLINDERS Ø16-25

ACCESSORI DI FISSAGGIO MOUNTING ACCESSORIES



Descrizione Description	Acciaio inox Stainless steel
1 Forcella / Clevis	147
2 Testa a snodo / Rod end	148
3 Dado per stelo / Piston rod nut	146
4 Dado testata / Cover nut	146
5 Piedino / Foot (MS3)	149
6 Cerniera / Hinge (MP3)	148
7 Flangia / Flange (MF8)	149

CILINDRI TONDI INOX CPO4 Ø32-40 STAINLESS STEEL CPO4 ROUND CYLINDERS Ø32-40

Cilindri tondi Ø32-40.

Altamente resistenti con testate cianfrinate e interamente realizzati in acciaio inox.

Disponibili in versione magnetica o non, a stelo singolo o passante.

Ø32-40 round cylinders.

Highly resistant with crimped covers and entirely built in stainless steel barrel.

Available with or without magnet, single or through piston rod.

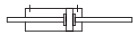


VERSIONE VERSION

CDE



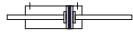
CDEP



CDEM



CDEMP



INFORMAZIONI TECNICHE TECHNICAL INFORMATION

Testate Covers	Acciaio inox AISI304 AISI304 Stainless steel
Tubo Tube	Acciaio inox AISI304 AISI304 Stainless steel
Pistone Piston	Alluminio Aluminium
Guarnizioni Seals	Poliuretano - NBR Polyurethane - NBR
Boccola guida Guiding bush	Bronzo sinterizzato Sintered bronze
Stelo Piston rod	Acciaio inox AISI316 AISI316 Stainless steel
Pressione MAX MAX pressure	10 bar
Temperatura di impiego Working temperature	-20°C +80°C con aria secca -20°C +80°C with dry air
Fluido Working fluid	Aria compressa filtrata e lubrificata e non Filtered and lubricated or not compressed air

CHIAVI DI CODIFICA CYLINDERS KEY CODE

Versione Version		Diametro Diameter	Corsa Stroke	Tipo costruttivo Design Type	Guarnizioni Seals
CDEMI	Doppio effetto non magnetico Double acting non magnetic	32	0...1000	D	- Standard
CDEMI	Doppio effetto magnetico Double acting magnetic	40			V Guarnizioni FKM FKM seals
CDEPI	Doppio effetto stelo passante non magnetico Double acting through rod non magnetic				VG Guarnizione stelo FKM FKM rod seal
CDEMPI	Doppio effetto stelo passante magnetico Double acting through rod magnetic				


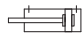
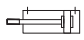

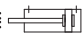

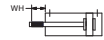
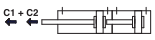
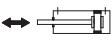
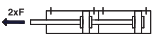
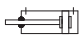
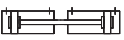


CORSE STANDARD STANDARD STROKES

Ø (mm)	Corse standard (mm) Standard strokes (mm)										
32	10	25	40	50	80	100	125	160	200	250	300
40	10	25	40	50	80	100	125	160	200	250	300

FORZE TEORICHE A 6 BAR THEORETICAL FORCES AT 6 BAR

Ø (mm)	Forza di spinta (N) Thrust force (N)	Forza di trazione (N) Traction force (N)
32	482	414
40	754	633

VARIANTI VARIANTS

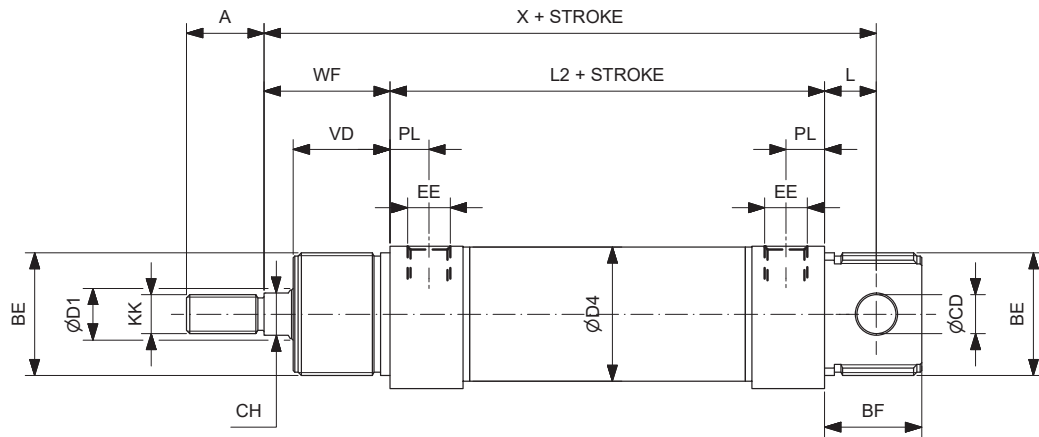
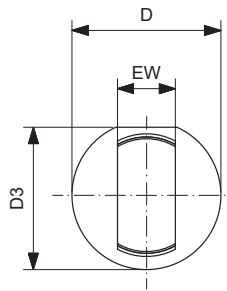
Simbolo Symbol	Caratteristiche Features	Simbolo Symbol	Caratteristiche Features
 	Resistente alle alte temperature -10...+150°C Heat-resistant -10...+150°C		Filettature e steli su richiesta Custom made thread or piston rod
 	Resistente alle basse temperature -40...+80°C Low temperature resistant -40...+80°C		Guarnizione stelo ad elevata resistenza chimica Rod seal with increased chemical resistance
 WH	Stelo prolungato Piston rod extension	 C1 + C2	Configurazione tandem a più posizioni Multi position configuration
	Basso attrito Low friction	 2xP	Configurazione tandem a doppia spinta Double thrust tandem configuration
	Raschia stelo duro in poliestere Hard wiper in polyester		Configurazione tandem contrapposti anteriore Front opposed tandem configuration
 FDA	Lubrificazione FDA FDA lubrication		Configurazione tandem contrapposti posteriore Rear opposed tandem configuration

CILINDRI TONDI INOX CP04 Ø32-40 STAINLESS STEEL CP04 ROUND CYLINDERS Ø32-40

DOPPIO EFFETTO
DOUBLE ACTING

CDEIØ/...D

CDEMIØ/...D

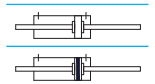
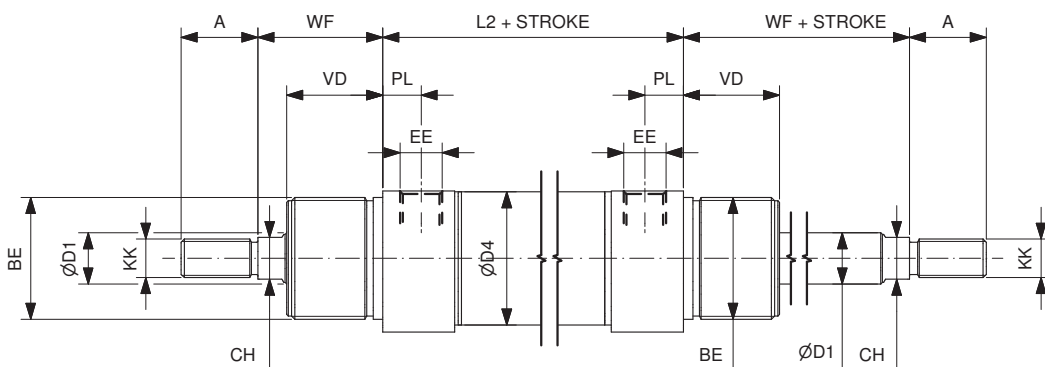
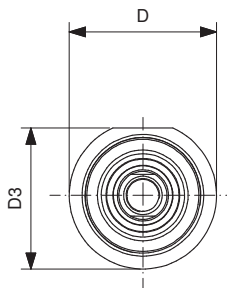


Ømm	ØD1	KK	A	CH	BE	WF	VD	PL	EE	X	L2	L	ØD4	ØCD	BF	D	EW	D3
32	12	M10X1.25	22	10	M30X1.5	34	26	9	1/8"G	117.5	69.5	14	33.6	10	26	38	16	36.5
40	16	M12X1.25	24	13	M38X1.5	39	30	12	1/4"G	139.5	84.5	16	41.6	12	30	46	18	44

DOPPIO EFFETTO PASSANTE
DOUBLE ACTING THROUGH PISTON ROD

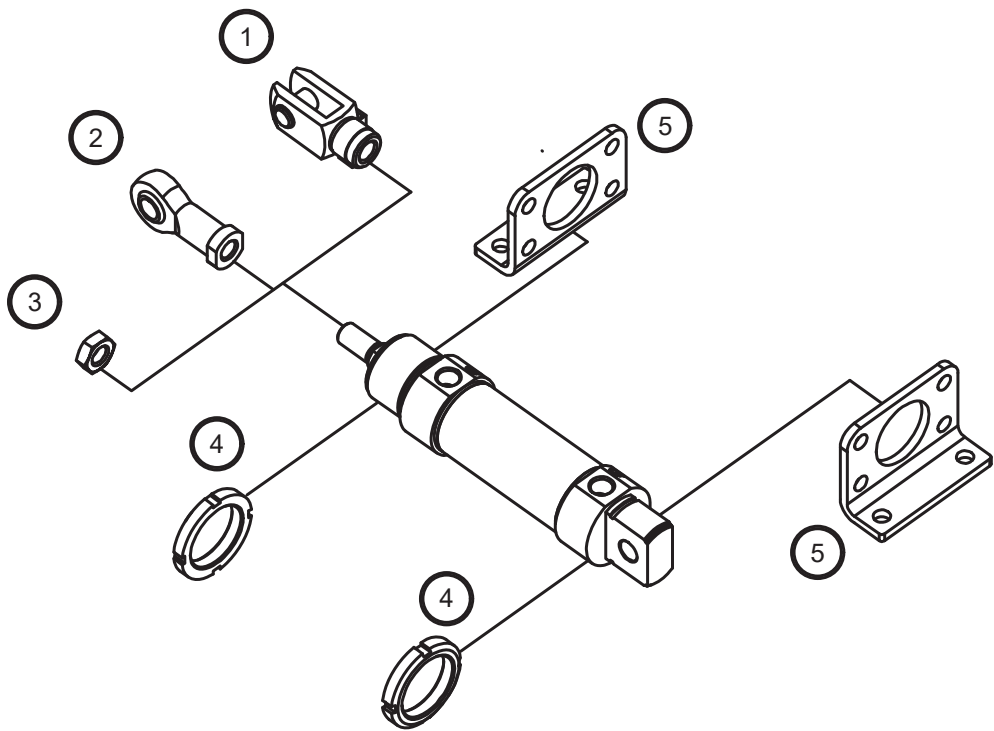
CDEPIØ/...D

CDEMPIØ/...D



Ømm	ØD1	KK	A	CH	BE	WF	VD	PL	EE	L2	ØD4	D	D3
32	12	M10X1.25	22	10	M30X1.5	34	26	9	1/8"G	69.5	33.6	38	36.5
40	16	M12X1.25	24	13	M38X1.5	39	30	12	1/4"G	84.5	41.6	46	44

ACCESSORI DI FISSAGGIO
MOUNTING ACCESSORIES



Descrizione Description	Acciaio inox Stainless steel
1 Forcella / Clevis	147
2 Testa a snodo / Rod end	148
3 Dado per stelo / Piston rod nut	146
4 Ghiera / Slotted nut	147
5 Piedino flangia / Foot flange	154