

2/ N
 16 C
 -1 E
60
 N 12 12 69 30 30 8 24 12 6 8 66 29 20 10 10 8 M M 25 18 46 68 32 B 22 4, 6 8 4, 5, 9 5, 32 24 58 18 49 18 22 49
 R -1 /1 0 4 4 3, R 0, 5 5 5 5 ,5
 B16 6 5 O 5
 2/ N
 16 C
 -2 E
00
 N 12 12 69 30 30 8 24 12 6 8 66 29 25 10 10 8 M M 25 18 46 68 37 B 27 4, 6 8 4, 5, 9 5, 32 24 58 18 49 18 22 49
 R -1 /1 0 4 4 3, R 0, 5 5 5 5 ,5
 B16 6 5 O 5
 2/ N
 16 C
 -2 E
50
 N 12 12 69 30 30 8 24 12 6 8 66 29 32 10 10 8 M M 25 18 46 68 44 B 34 4, 6 8 4, 5, 9 5, 32 24 58 18 49 18 22 49
 R -1 /1 0 4 4 3, R 0, 5 5 5 5 ,5
 B16 6 5 O 5
 2/ N
 16 C
 -3 E
20
 N 12 12 69 30 30 8 24 12 6 8 66 29 40 10 10 8 M M 25 18 46 68 52 B 42 4, 6 8 4, 5 5 9 5, 32 24 58 18 49 18 22 49
 R -1 /1 0 4 4 3, R 0, 5 5 5 5 ,5
 B16 6 5 O 5
 2/ N
 16 C
 -4 E
00
 N 12 12 69 30 30 8 24 12 6 8 66 29 50 10 10 8 M M 25 18 46 68 62 B 52 4, 6 8 4, 5, 9 5, 32 24 58 18 49 18 22 49
 R -1 /1 0 4 4 3, R 0, 5 5 5 5 ,5
 B16 6 5 O 5
 2/ N
 16 C
 -5 E
00
 N 20 20 79 34 37 12 27 17 8, 15 78 32 50 12 12 10 M M 25 40 58 10 21 B 71 5, 9 10 7, 6, 11 6, 38 38 68 32 72 20 23 58
 R 5 5 6 8 6 R 5 5 5 5 ,5
B2 O
0- N
50 C
 E
 N 20 20 79 34 37 12 27 17 8, 15 78 32 10 12 12 10 M M 25 40 58 10 26 B 12 5, 9 10 7, 6, 11 6, 38 38 68 32 72 20 23 58
 R 5 0 5 6 8 6 R 1 5 5 5 5 ,5
B2 O
0- N
10 C
0 E
 N 20 20 79 34 37 12 27 17 8, 15 78 32 16 12 12 10 M M 25 40 58 10 32 B 18 5, 9 10 7, 6, 11 6, 38 38 68 32 72 20 23 58
 R 5 0 5 6 8 6 R 1 5 5 5 5 ,5
B2 O
0- N
16 C
0 E
 N 20 20 79 34 37 12 27 17 8, 15 78 32 20 12 12 10 M M 25 40 58 10 36 B 22 5, 9 10 7, 6, 11 6, 38 38 68 32 72 20 23 58
 R 5 0 5 6 8 6 R 1 5 5 5 5 ,5

B2
0-
20
0
N 20 20 79 34 37 12 27 17 8, 15 78 32 25 12 12 10 M M 25 40 58 10 41 B 27 5, 9 10 7, 6, 11 6, 38 38 68 32 72 20 23 58
R 5 0 5 6 8 6 R 1 5 5 5 5 ,5

B2
0-
25
0
N 20 20 79 34 37 12 27 17 8, 15 78 32 32 12 12 10 M M 25 40 58 10 48 B 34 5, 9 10 7, 6, 11 6, 38 38 68 32 72 20 23 58
R 5 0 5 6 8 6 R 1 5 5 5 5 ,5

B2
0-
32
0
N 20 20 79 34 37 12 27 17 8, 15 78 32 40 12 12 10 M M 25 40 58 10 56 B 42 5, 9 10 7, 6, 11 6, 38 38 68 32 72 20 23 58
R 5 0 5 6 8 6 R 1 5 5 5 5 ,5

B2
0-
40
0
N 20 20 79 34 37 12 27 17 8, 15 78 32 50 12 12 10 M M 25 40 58 10 66 B 52 5, 9 10 7, 6, 11 6, 38 38 68 32 72 20 23 58
R 5 0 5 6 8 6 R 1 5 5 5 5 ,5

B2
0-
50
0
N 25 25 79 34 37 12 27 17 8, 15 78 32 50 12 12 10 M M 25 40 58 10 21 B 71 5, 9 10 7, 6, 11 6, 38 38 68 32 72 20 23 58
R 5 5 6 8 6 R 5 5 5 5 ,5

B2
5-
50
0
N 25 25 79 34 37 12 27 17 8, 15 78 32 10 12 12 10 M M 25 40 58 10 26 B 12 5, 9 10 7, 6, 11 6, 38 38 68 32 72 20 23 58
R 5 0 5 6 8 6 R 1 5 5 5 5 ,5

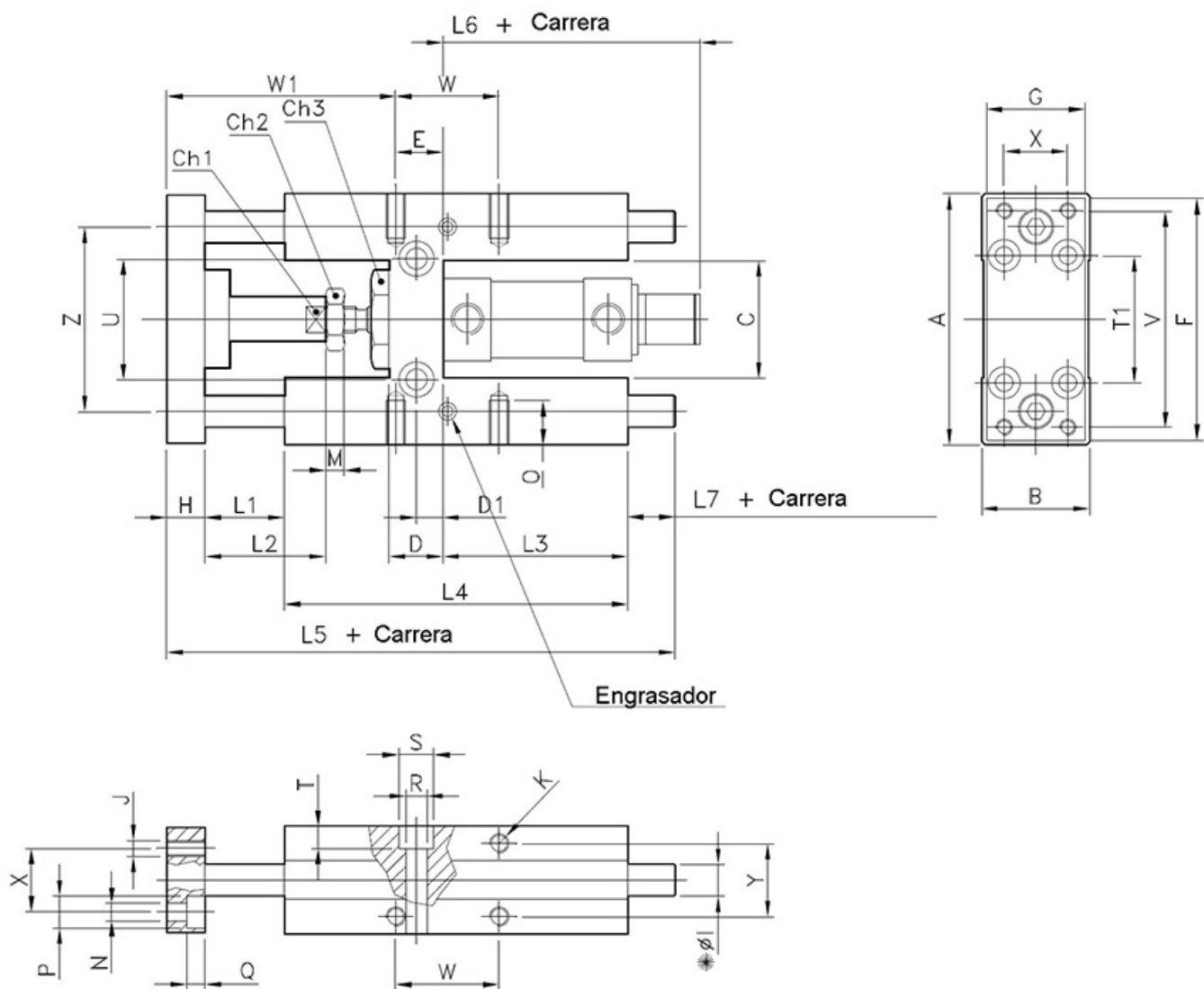
B2
5-
10
0
N 25 25 79 34 37 12 27 17 8, 15 78 32 16 12 12 10 M M 25 40 58 10 32 B 18 5, 9 10 7, 6, 11 6, 38 38 68 32 72 20 23 58
R 5 0 5 6 8 6 R 1 5 5 5 5 ,5

B2
5-
16
0
N 25 25 79 34 37 12 27 17 8, 15 78 32 20 12 12 10 M M 25 40 58 10 36 B 22 5, 9 10 7, 6, 11 6, 38 38 68 32 72 20 23 58
R 5 0 5 6 8 6 R 1 5 5 5 5 ,5

B2
5-
20
0
N 25 25 79 34 37 12 27 17 8, 15 78 32 25 12 12 10 M M 25 40 58 10 41 B 27 5, 9 10 7, 6, 11 6, 38 38 68 32 72 20 23 58
R 5 0 5 6 8 6 R 1 5 5 5 5 ,5

B2
5-
25
0
N 25 25 79 34 37 12 27 17 8, 15 78 32 32 12 12 10 M M 25 40 58 10 48 B 34 5, 9 10 7, 6, 11 6, 38 38 68 32 72 20 23 58

R 5 0 5 6 8 6 R 1 5 5 5 5 ,5
B2 O
5- N
32 C
0 E
N 25 25 79 34 37 12 27 17 8, 15 78 32 40 12 12 10 M M 25 40 58 10 56 B 42 5, 9 10 7, 6, 11 6, 38 38 68 32 72 20 23 58
R 5 0 5 6 8 6 R 1 5 5 5 5 ,5
B2 O
5- N
40 C
0 E
N 25 25 79 34 37 12 27 17 8, 15 78 32 50 12 12 10 M M 25 40 58 10 66 B 52 5, 9 10 7, 6, 11 6, 38 38 68 32 72 20 23 58
R 5 0 5 6 8 6 R 1 5 5 5 5 ,5
B2 O
5- N
50 C
0 E



* $\phi 11$ CON COJINETES DE BRONCE (ESTANDAR)
 $\phi 12$ CON CASQUILLOS DE BOLAS (BAJO DEMANDA)

\emptyset	A	B	C	Ch1	Ch2	Ch3	D	D1	E	F	G	H	$\phi 11$	$\phi 12$	J	K	L1	L2	L3
12 - 16	69	30	30	8	10	24	12	6	8	66	29	10	10	8	M4	M4	25	18	46
20	79	34	37	12	13	27	17	8.5	15	78	32	12	12	10	M5	M6	25	40	58
25	79	34	37	12	17	27	17	8.5	15	78	32	12	12	10	M5	M6	25	40	58

\emptyset	L4	L5	L6	L7	M	N	O	P	Q	R	S	T	T1	U	V	W	W1	X	Y	Z
12 - 16	68	123.5	73	20.5	4	4.5	6	8	4.5	5.5	9	5.5	32	24	58	18	49	18	22	49.5
20	108	166	87	21	5	5.5	9	10	7.5	6.5	11	6.5	38	38	68	32.5	20	72	23	58
25	108	166	91	21	6	5.5	9	10	7.5	6.5	11	6.5	38	38	68	32.5	20	72	23	58