

LINEA 140 | VALVOLE A PEDALE

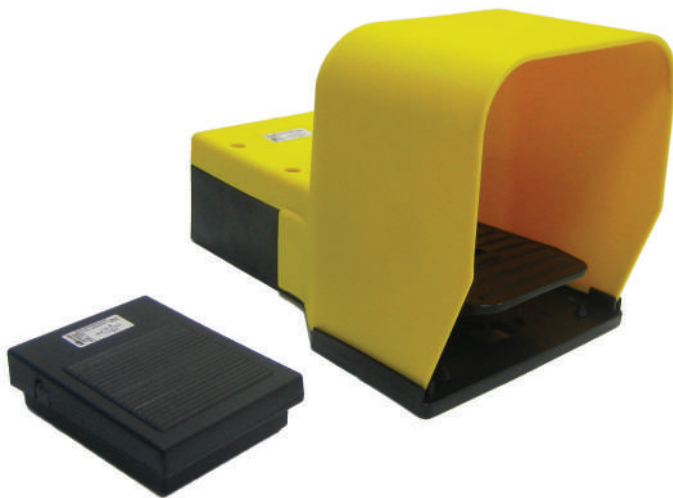
TRATTAMENTO ARIA

VALVOLE

CILINDRI

RACCORDI

TRATTAMENTO ACQUA



GUIDA ALLE REFERENZE

P140 G 1/4 5 B PP

Prodotto

P140 = Valvole a pedale serie 140

Tipologie

G = Pedale

M = Micropedale

Connessione

1/4 = G1/4"

M5 = M5

AU4 = Raccordi automatici ø4mm

EL = Elettrico

Opzione

PP = Con protezione
SP = Senza protezione

Opzione

B = Bistabile

M = Monostabile

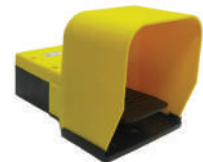
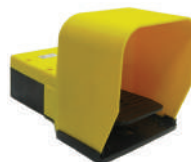
S = Monostabile con sicurezza

Funzione

3 = 3/2 NC

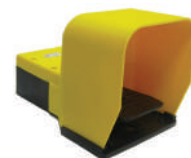
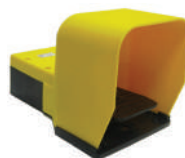
5 = 5/2

0 = Microswitch NC-NO



DATI TECNICI PEDALI PNEUMATICI

Referenza	P140 M __	P140 G AU4 __	P140 G 1/4 __
Connessione	Push-in 4 mm - M5	Push-in 4mm	G1/4"
Fluido	aria filtrata con o senza lubrificazione		
Costruzione	valvola otturatore	valvola otturatore	valvola a spola
Portata di riferimento (P= 6bar; p= 1bar)	75 NI/min	75 NI/min	550 NI/min
Pressione d'esercizio	2 ÷ 10 bar (0,20÷ 1,0 Mpa)		
Range di temperatura	-10° / 50°C (14 / 122 °F)		
Peso	0,165 Kg	0,80 Kg	0,95 Kg

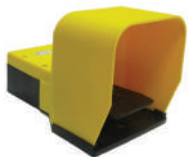


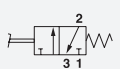
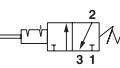
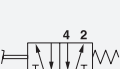
DATI TECNICI PEDALI ELETTRICI

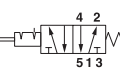
Referenza	P140 G EL 0 M PP	P140 G __
Costruzione		microswitch singolo NC+NO
Tipo	Monostabile	Monostabile + sicurezza
Range di temperatura	-25° / 70°C (-13 / 158°F)	
Tensione (V)	max 230V AC	
Corrente termica nominale	10 A	
Normativa (contatto elettrico)	IEC 60947 -5 -1 A600 Q300	
Peso	0,76 Kg	0,76 Kg

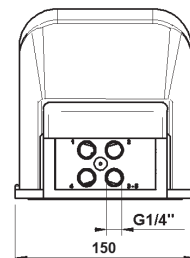
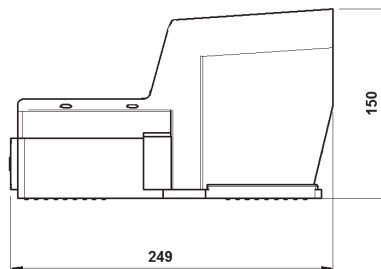
LINEA 140 | VALVOLE A PEDALE

VALVOLE A PEDALE CON PROTEZIONE, 5/2 G1/4" - 3/2 Ø4

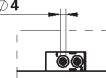


CODICE	REFERENZE
 1407493001 P140 G AU4 3 M PP 1407493002 P140 G AU4 3 S PP	
 1407493003 P140 G AU4 3 B PP	
 1407535001 P140 G 1/4 5 M PP GIALLO 1407535007 P140 G 1/4 5 M PP ARANCIONE 1407535002 P140 G 1/4 5 S PP GIALLO 1407535008 P140 G 1/4 5 S PP ARANCIONE	

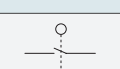
 1407535003 P140 G 1/4 5 B PP GIALLO 1407535009 P140 G 1/4 5 B PP ARANCIONE	
---	--

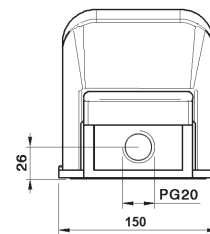
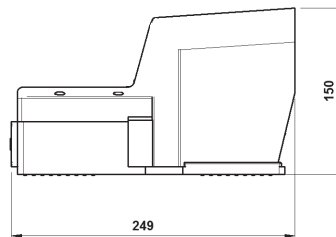


Raccordi automatici Ø4
Push-in fittings Ø4



PEDALE ELETTRICO PROTETTO

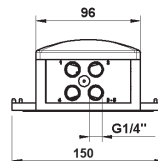
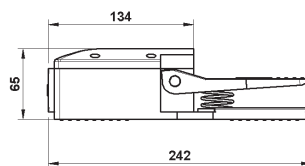
CODICE	REFERENZE
 1407660801 P140 G EL O M PP 1407660802 P140 G EL O S PP 1499A00005 Pressacavo IP 65	



VALVOLE A PEDALE SENZA PROTEZIONE, 5/2 G1/4" - 3/2 Ø4

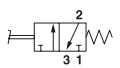


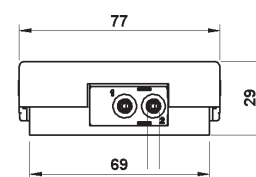
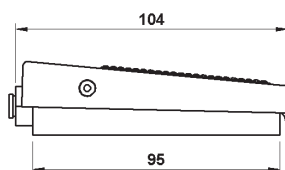
CODICE	REFERENZE
 1407535004 P140 G 1/4 5 M SP	
 1407535005 P140 G 1/4 5 B SP	



MICROPEDALE 3/2 Ø4 - M5



CODICE	REFERENZE
 1406493001 P140 M AU4 3 M SP 1406413001 P140 M M5 3 M SP	



Raccordi automatici ø4 / M5
Push-in fittings ø4 / M5

TRATTAMENTO ARIA

VALVOLE

CILINDRI

RACCORDI

TRATTAMENTO ACQUA