

CILINDROS NEUMATICOS

SENSORES MAGNÉTICOS

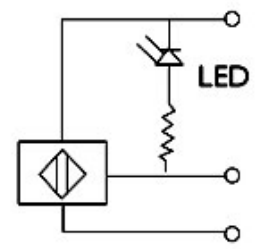
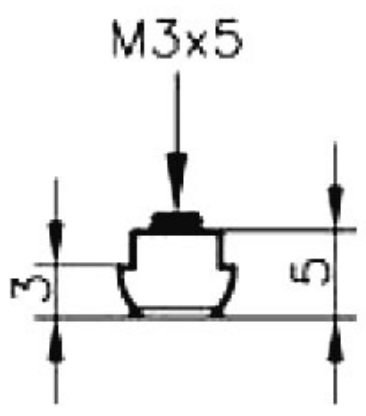
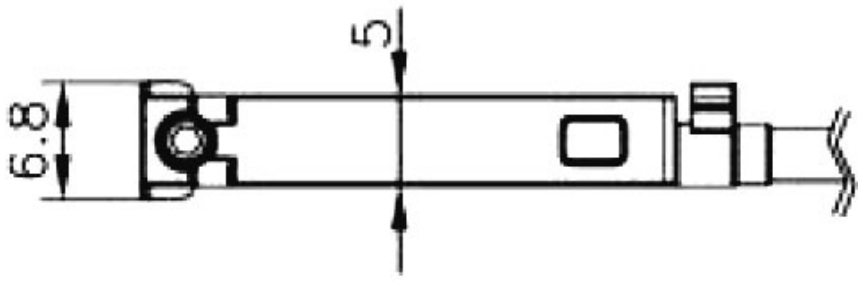
D.MAG.RES.10-30V DC NPN 2M.



Referencia: **SKH4C01200**

Características

Referencia	Conexion	Long (mm)	Int (mA)	Consumo (W)	Señal
SKH3C01200	C ESTAÑADO	2000	200	4	LED AM
SKH3C01M8	M8	300	200	4	LED AM
SKH4C01M8	M8	300	200	4	LED AM
SKH4C01200	C ESTAÑADO	2000	200	4	LED AM



NPN-PNP Caída de voltaje = 0.7V