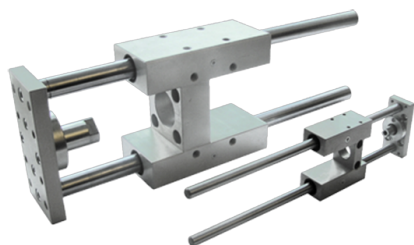


# CILINDROS NEUMATICOS

## UNIDADES DE GUIADO

### UN.GUIADO "H" COJINETES BRONCE



Referencia: **UGB06100-200**

#### Descripción

Proporcionan un guiado preciso. Existen tres versiones, (3er dígito):

B: Cojinete de bronce (Estándar)

S: Casquillo de bolas, para alta velocidad.

U: Cojinete de bronce, versión económica.

#### Características

| R   | Ø   | Di | A  | B  | C  | C  | D  | E   | F  | G  | H  | C  | Ø   | L1 | L2 | L3 | L4  | L5  | L6  | N   | O  | P  | Q   | Ti | R  | T  | U  | V   | V   | Z  |  |
|-----|-----|----|----|----|----|----|----|-----|----|----|----|----|-----|----|----|----|-----|-----|-----|-----|----|----|-----|----|----|----|----|-----|-----|----|--|
| ef  | á   |    |    |    |    | h  |    |     |    |    |    | ar | 1   |    |    |    |     |     |     |     |    |    | po  |    |    |    |    |     |     | 1  |  |
| er  | m   |    |    |    |    |    |    |     |    |    |    | re |     |    |    |    |     |     |     |     |    |    | de  |    |    |    |    |     |     |    |  |
| en  | etr |    |    |    |    |    |    |     |    |    |    | ra |     |    |    |    |     |     |     |     |    |    | co  |    |    |    |    |     |     |    |  |
| ci  | o ( |    |    |    |    |    |    |     |    |    |    | (m |     |    |    |    |     |     |     |     |    |    | j   |    |    |    |    |     |     |    |  |
| a   | m   |    |    |    |    |    |    |     |    |    |    | m) |     |    |    |    |     |     |     |     |    |    | et  |    |    |    |    |     |     |    |  |
|     | m)  |    |    |    |    |    |    |     |    |    |    |    |     |    |    |    |     |     |     |     |    |    | e   |    |    |    |    |     |     |    |  |
| NR  | 32  | 32 | 97 | 49 | 51 | 15 | 24 | 4,3 | 93 | 45 | 12 | 50 | 12  | 25 | 42 | 75 | 125 | 237 | 75  | 6,6 | 12 | 11 | 6,5 | BR | M6 | 78 | 61 | 32, | 82, | 74 |  |
| B3  |     |    |    |    |    |    |    |     |    |    |    |    |     |    |    |    |     |     |     |     |    |    | ON  |    |    |    |    | 5   | 7   |    |  |
| 2-5 |     |    |    |    |    |    |    |     |    |    |    |    |     |    |    |    |     |     |     |     |    |    | CE  |    |    |    |    |     |     |    |  |
| 0   |     |    |    |    |    |    |    |     |    |    |    |    |     |    |    |    |     |     |     |     |    |    |     |    |    |    |    |     |     |    |  |
| NR  | 32  | 32 | 97 | 49 | 51 | 15 | 24 | 4,3 | 93 | 45 | 12 | 12 | 100 | 25 | 42 | 75 | 125 | 287 | 125 | 6,6 | 12 | 11 | 6,5 | BR | M6 | 78 | 61 | 32, | 82, | 74 |  |
| B3  |     |    |    |    |    |    |    |     |    |    |    |    |     |    |    |    |     |     |     |     |    |    | ON  |    |    |    |    | 5   | 7   |    |  |
| 2-1 |     |    |    |    |    |    |    |     |    |    |    |    |     |    |    |    |     |     |     |     |    |    | CE  |    |    |    |    |     |     |    |  |
| 00  |     |    |    |    |    |    |    |     |    |    |    |    |     |    |    |    |     |     |     |     |    |    |     |    |    |    |    |     |     |    |  |
| NR  | 32  | 32 | 97 | 49 | 51 | 15 | 24 | 4,3 | 93 | 45 | 12 | 12 | 160 | 25 | 42 | 75 | 125 | 347 | 185 | 6,6 | 12 | 11 | 6,5 | BR | M6 | 78 | 61 | 32, | 82, | 74 |  |
| B3  |     |    |    |    |    |    |    |     |    |    |    |    |     |    |    |    |     |     |     |     |    |    | ON  |    |    |    |    | 5   | 7   |    |  |
| 2-1 |     |    |    |    |    |    |    |     |    |    |    |    |     |    |    |    |     |     |     |     |    |    | CE  |    |    |    |    |     |     |    |  |
| 60  |     |    |    |    |    |    |    |     |    |    |    |    |     |    |    |    |     |     |     |     |    |    |     |    |    |    |    |     |     |    |  |
| NR  | 32  | 32 | 97 | 49 | 51 | 15 | 24 | 4,3 | 93 | 45 | 12 | 12 | 200 | 25 | 42 | 75 | 125 | 387 | 225 | 6,6 | 12 | 11 | 6,5 | BR | M6 | 78 | 61 | 32, | 82, | 74 |  |
| B3  |     |    |    |    |    |    |    |     |    |    |    |    |     |    |    |    |     |     |     |     |    |    | ON  |    |    |    |    | 5   | 7   |    |  |
| 2-2 |     |    |    |    |    |    |    |     |    |    |    |    |     |    |    |    |     |     |     |     |    |    | CE  |    |    |    |    |     |     |    |  |
| 00  |     |    |    |    |    |    |    |     |    |    |    |    |     |    |    |    |     |     |     |     |    |    |     |    |    |    |    |     |     |    |  |
| NR  | 32  | 32 | 97 | 49 | 51 | 15 | 24 | 4,3 | 93 | 45 | 12 | 12 | 250 | 25 | 42 | 75 | 125 | 437 | 275 | 6,6 | 12 | 11 | 6,5 | BR | M6 | 78 | 61 | 32, | 82, | 74 |  |
| B3  |     |    |    |    |    |    |    |     |    |    |    |    |     |    |    |    |     |     |     |     |    |    | ON  |    |    |    |    | 5   | 7   |    |  |
| 2-2 |     |    |    |    |    |    |    |     |    |    |    |    |     |    |    |    |     |     |     |     |    |    | CE  |    |    |    |    |     |     |    |  |
| 50  |     |    |    |    |    |    |    |     |    |    |    |    |     |    |    |    |     |     |     |     |    |    |     |    |    |    |    |     |     |    |  |
| NR  | 32  | 32 | 97 | 49 | 51 | 15 | 24 | 4,3 | 93 | 45 | 12 | 12 | 320 | 25 | 42 | 75 | 125 | 507 | 345 | 6,6 | 12 | 11 | 6,5 | BR | M6 | 78 | 61 | 32, | 82, | 74 |  |





|   |   |                       |
|---|---|-----------------------|
| 60  | NR 80 80 18910510526 50 25 18010020 20025 25 50 11119546722711 20 18 11 | BR M1 13013072 104148 |
| B8  | ,5  | ON 0                  |
| 0-2   |   | CE                    |
| 00  |   |                       |
| NR 80 80 18910510526 50 25 18010020 25025 25 50 11119551727711 20 18 11 | BR M1 13013072 104148   |                       |
| B8  | ,5  | ON 0                  |
| 0-2   |   | CE                    |
| 50  |   |                       |
| NR 80 80 18910510526 50 25 18010020 25 32025 50 11119558734711 20 18 11 | BR M1 13013072 104148   |                       |
| B8  | ,5  | ON 0                  |
| 0-3   |   | CE                    |
| 20  |   |                       |
| NR 80 80 18910510526 50 25 18010020 25 40025 50 11119566742711 20 18 11 | BR M1 13013072 104148   |                       |
| B8  | ,5  | ON 0                  |
| 0-4   |   | CE                    |
| 00  |   |                       |
| NR 80 80 18910510526 50 25 18010020 25 50025 50 11119576752711 20 18 11 | BR M1 13013072 104148   |                       |
| B8  | ,5  | ON 0                  |
| 0-5   |   | CE                    |
| 00  |   |                       |
| NR 10010021313013026 55 30 20612020 25 50 25 50 12821834077 11 20 18 11 | BR M1 15015089 105173   |                       |
| B1  | ,5  | ON 0                  |
| 00-   |   | CE                    |
| 50  |   |                       |
| NR 10010021313013026 55 30 20612020 25 10025 50 12821839012711 20 18 22 | BR M1 15015089 105173   |                       |
| B1  | ,5  | ON 0                  |
| 00-   |   | CE                    |
| 100   |   |                       |
| NR 10010021313013026 55 30 20612020 25 16025 50 12821845018711 20 18 11 | BR M1 15015089 105173   |                       |
| B1  | ,5  | ON 0                  |
| 00-   |   | CE                    |
| 160   |   |                       |
| NR 10010021313013026 55 30 20612020 25 20025 50 12821849022711 20 18 11 | BR M1 15015089 105173   |                       |
| B1  | ,5  | ON 0                  |
| 00-   |   | CE                    |
| 200   |   |                       |
| NR 10010021313013026 55 30 20612020 25 25025 50 12821854027711 20 18 11 | BR M1 15015089 105173   |                       |
| B1  | ,5  | ON 0                  |
| 00-   |   | CE                    |
| 250   |   |                       |
| NR 10010021313013026 55 30 20612020 25 32025 50 12821861034711 20 18 11 | BR M1 15015089 105173   |                       |
| B1  | ,5  | ON 0                  |
| 00-   |   | CE                    |
| 320   |   |                       |
| NR 10010021313013026 55 30 20612020 25 40025 50 12821869042711 20 18 11 | BR M1 15015089 105173   |                       |
| B1  | ,5  | ON 0                  |
| 00-   |   | CE                    |
| 400   |   |                       |
| NR 10010021313013026 55 30 20612020 25 50025 50 12821879052711 20 18 11 | BR M1 15015089 105173   |                       |
| B1  | ,5  | ON 0                  |
| 00-   |   | CE                    |
| 500   |   |                       |