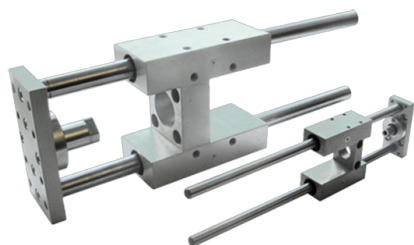


CILINDROS NEUMATICOS

UNIDADES DE GUIADO

UN.GUIADO "H" COJINETES BRONCE



Referencia: **UGB0612/16-50**

Descripción

Proporcionan un guiado preciso. Existen tres versiones, (3er dígito):

B: Cojinete de bronce (Estándar)

S: Casquillo de bolas, para alta velocidad.

U: Cojinete de bronce, versión económica.

Características

| R | Ø | Di | A | B | C | C | D | E | F | G | H | C | Ø | L1 | L2 | L3 | L4 | L5 | L6 | N | O | P | Q | Ti | R | T | U | V | V | Z | |
|-----|-----|----|----|----|----|----|----|-----|----|----|----|----|-----|----|----|----|-----|-----|-----|-----|----|----|-----|----|----|----|----|-----|-----|----|--|
| ef | á | | | | | h | | | | | | ar | 1 | | | | | | | | | | po | | | | | | | 1 | |
| er | m | | | | | | | | | | | re | | | | | | | | | | | de | | | | | | | | |
| en | etr | | | | | | | | | | | ra | | | | | | | | | | | co | | | | | | | | |
| ci | o (| | | | | | | | | | | (m | | | | | | | | | | | jin | | | | | | | | |
| a | m | | | | | | | | | | | m) | | | | | | | | | | | et | | | | | | | | |
| | m) | | | | | | | | | | | | | | | | | | | | | | e | | | | | | | | |
| NR | 32 | 32 | 97 | 49 | 51 | 15 | 24 | 4,3 | 93 | 45 | 12 | 50 | 12 | 25 | 42 | 75 | 125 | 237 | 75 | 6,6 | 12 | 11 | 6,5 | BR | M6 | 78 | 61 | 32, | 82, | 74 | |
| B3 | | | | | | | | | | | | | | | | | | | | | | | ON | | | | | 5 | 7 | | |
| 2-5 | | | | | | | | | | | | | | | | | | | | | | | CE | | | | | | | | |
| 0 | | | | | | | | | | | | | | | | | | | | | | | | | | | | | | | |
| NR | 32 | 32 | 97 | 49 | 51 | 15 | 24 | 4,3 | 93 | 45 | 12 | 12 | 100 | 25 | 42 | 75 | 125 | 287 | 125 | 6,6 | 12 | 11 | 6,5 | BR | M6 | 78 | 61 | 32, | 82, | 74 | |
| B3 | | | | | | | | | | | | | | | | | | | | | | | ON | | | | | 5 | 7 | | |
| 2-1 | | | | | | | | | | | | | | | | | | | | | | | CE | | | | | | | | |
| 00 | | | | | | | | | | | | | | | | | | | | | | | | | | | | | | | |
| NR | 32 | 32 | 97 | 49 | 51 | 15 | 24 | 4,3 | 93 | 45 | 12 | 12 | 160 | 25 | 42 | 75 | 125 | 347 | 185 | 6,6 | 12 | 11 | 6,5 | BR | M6 | 78 | 61 | 32, | 82, | 74 | |
| B3 | | | | | | | | | | | | | | | | | | | | | | | ON | | | | | 5 | 7 | | |
| 2-1 | | | | | | | | | | | | | | | | | | | | | | | CE | | | | | | | | |
| 60 | | | | | | | | | | | | | | | | | | | | | | | | | | | | | | | |
| NR | 32 | 32 | 97 | 49 | 51 | 15 | 24 | 4,3 | 93 | 45 | 12 | 12 | 200 | 25 | 42 | 75 | 125 | 387 | 225 | 6,6 | 12 | 11 | 6,5 | BR | M6 | 78 | 61 | 32, | 82, | 74 | |
| B3 | | | | | | | | | | | | | | | | | | | | | | | ON | | | | | 5 | 7 | | |
| 2-2 | | | | | | | | | | | | | | | | | | | | | | | CE | | | | | | | | |
| 00 | | | | | | | | | | | | | | | | | | | | | | | | | | | | | | | |
| NR | 32 | 32 | 97 | 49 | 51 | 15 | 24 | 4,3 | 93 | 45 | 12 | 12 | 250 | 25 | 42 | 75 | 125 | 437 | 275 | 6,6 | 12 | 11 | 6,5 | BR | M6 | 78 | 61 | 32, | 82, | 74 | |
| B3 | | | | | | | | | | | | | | | | | | | | | | | ON | | | | | 5 | 7 | | |
| 2-2 | | | | | | | | | | | | | | | | | | | | | | | CE | | | | | | | | |
| 50 | | | | | | | | | | | | | | | | | | | | | | | | | | | | | | | |
| NR | 32 | 32 | 97 | 49 | 51 | 15 | 24 | 4,3 | 93 | 45 | 12 | 12 | 320 | 25 | 42 | 75 | 125 | 507 | 345 | 6,6 | 12 | 11 | 6,5 | BR | M6 | 78 | 61 | 32, | 82, | 74 | |

| | | |
|---|---|-----------------------|
| 60 | NR 80 80 18910510526 50 25 18010020 20025 25 50 11119546722711 20 18 11 | BR M1 13013072 104148 |
| B8 | ,5 | ON 0 |
| 0-2 | | CE |
| 00 | | |
| NR 80 80 18910510526 50 25 18010020 25025 25 50 11119551727711 20 18 11 | BR M1 13013072 104148 | |
| B8 | ,5 | ON 0 |
| 0-2 | | CE |
| 50 | | |
| NR 80 80 18910510526 50 25 18010020 25 32025 50 11119558734711 20 18 11 | BR M1 13013072 104148 | |
| B8 | ,5 | ON 0 |
| 0-3 | | CE |
| 20 | | |
| NR 80 80 18910510526 50 25 18010020 25 40025 50 11119566742711 20 18 11 | BR M1 13013072 104148 | |
| B8 | ,5 | ON 0 |
| 0-4 | | CE |
| 00 | | |
| NR 80 80 18910510526 50 25 18010020 25 50025 50 11119576752711 20 18 11 | BR M1 13013072 104148 | |
| B8 | ,5 | ON 0 |
| 0-5 | | CE |
| 00 | | |
| NR 10010021313013026 55 30 20612020 25 50 25 50 12821834077 11 20 18 11 | BR M1 15015089 105173 | |
| B1 | ,5 | ON 0 |
| 00- | | CE |
| 50 | | |
| NR 10010021313013026 55 30 20612020 25 10025 50 12821839012711 20 18 22 | BR M1 15015089 105173 | |
| B1 | ,5 | ON 0 |
| 00- | | CE |
| 100 | | |
| NR 10010021313013026 55 30 20612020 25 16025 50 12821845018711 20 18 11 | BR M1 15015089 105173 | |
| B1 | ,5 | ON 0 |
| 00- | | CE |
| 160 | | |
| NR 10010021313013026 55 30 20612020 25 20025 50 12821849022711 20 18 11 | BR M1 15015089 105173 | |
| B1 | ,5 | ON 0 |
| 00- | | CE |
| 200 | | |
| NR 10010021313013026 55 30 20612020 25 25025 50 12821854027711 20 18 11 | BR M1 15015089 105173 | |
| B1 | ,5 | ON 0 |
| 00- | | CE |
| 250 | | |
| NR 10010021313013026 55 30 20612020 25 32025 50 12821861034711 20 18 11 | BR M1 15015089 105173 | |
| B1 | ,5 | ON 0 |
| 00- | | CE |
| 320 | | |
| NR 10010021313013026 55 30 20612020 25 40025 50 12821869042711 20 18 11 | BR M1 15015089 105173 | |
| B1 | ,5 | ON 0 |
| 00- | | CE |
| 400 | | |
| NR 10010021313013026 55 30 20612020 25 50025 50 12821879052711 20 18 11 | BR M1 15015089 105173 | |
| B1 | ,5 | ON 0 |
| 00- | | CE |
| 500 | | |